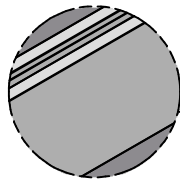


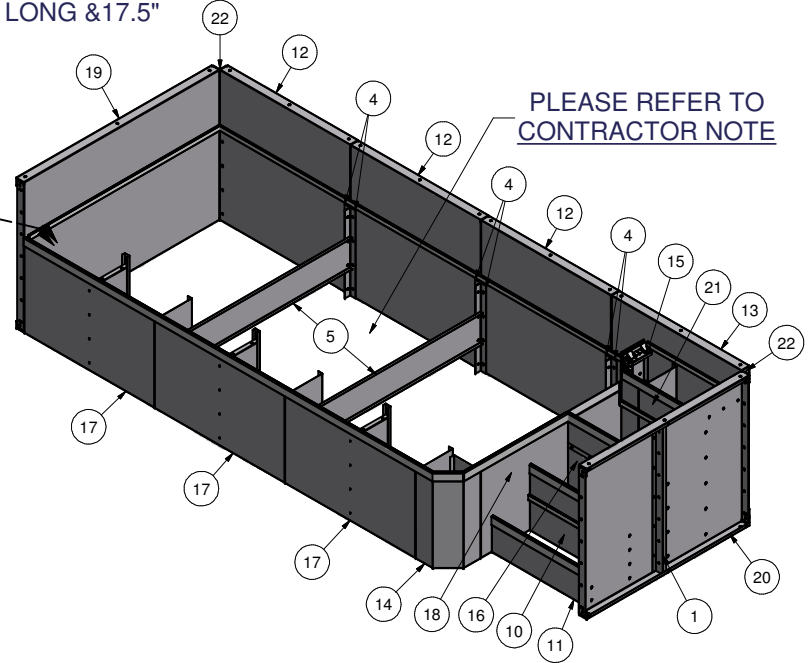
ITEM	QTY	PART NUMBER	DESCRIPTION
1	6	48-Z-RIB	48" Z-RIB
2	46	COP-KCVRET-W-1	COP COPING STIFFNER 1 5/8"-1PC
3	1	ESC-7295-TRB	BRACE, TOP RISER SUPPORT
4	6	ESC-8705-BB	BRACE, 90° L BRACKET
5	3	ESC-8705-CB	BRACE, CENTER SUPPORT
6	1	ESC-8794-SNRS	BRACE, SUNLEDGE RISER SUPPORT
7	3	ESC-8794-SRMS	BRACE, SUNLEDGE RISER MIDDLE SUPPORT
8	3	ESC-8794-SRS	BRACE, SUNLEDGE RISER SUPPORT
9	3	ESC-9367-DS	BRACE, DRIVE STAKE CHANNEL SET
10	1	ESC-9905-BMR	STRAIGHT, BOTTOM MIDDLE RISER
11	1	ESC-9905-BR	STRAIGHT, BOTTOM RISER
12	3	ESC-9905-BW	STRAIGHT, OPN BACK WALL
13	1	ESC-9905-BWR	STRAIGHT, OPN BACK WALL, RIGHT
14	1	ESC-9905-DRSR	DBL REV, SUNLEDGE RISER
15	1	ESC-9905-DRTR	DBL REV, TOP RISER
16	1	ESC-9905-MR	STRAIGHT, MIDDLE RISER
17	3	ESC-9905-SR	STRAIGHT, SUNLEDGE RISER
18	1	ESC-9905-SRB	STRAIGHT, SUNLEDGE RISER, BACK
19	1	ESC-9905-SWL	STRAIGHT, OPN SIDE WALL, LEFT
20	1	ESC-9905-SWR	STRAIGHT, OPN SIDE WALL, RIGHT
21	1	ESC-9905-TR	STRAIGHT, TOP RISER
22	2	IPC-AB90-48	2.5" X 2.5" X 48" X 90 DEG OPN CORNER BRACE
23	0'	OPC-CONREC-XX	NOTCHED CONCRETE RECEPTOR
24	32'	OPC-CONREC-XXU	UN-NOTCHED CONCRETE RECEPTOR
25	35'	SSC-1099-PFT	STEEL STEP PVC BEAD RETAINER (PER FT)

NOTE:
INCLUDE (2) PVC 6" RADIUS INSERTS WITH THIS STEP/SUNLEDGE FOR CORNERS, 8" LONG & 17.5" LONG.

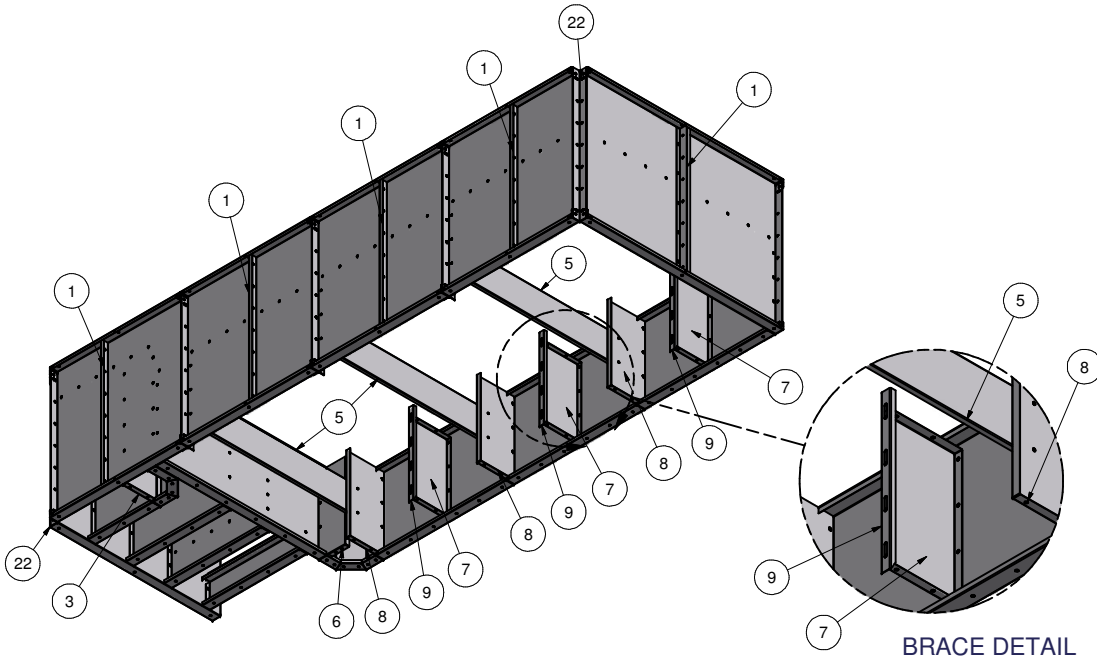


BEAD RECEIVER DETAIL

LABEL ALL PARTS AND COMPLETELY ASSEMBLE STEP W030801



PLEASE REFER TO CONTRACTOR NOTE



BRACE DETAIL

CONTRACTOR NOTE:

CONTRACTOR IS RESPONSIBLE FOR SECURING ALL RISERS INTO PLACE WITH REBAR HOLES BEFORE BACKFILLING THIS CUSTOM STEP

KEEP BEAD RECEIVER ATTACHED TO THE RISERS AND WALL PANELS FOR SHIPPING. A TOTAL OF 420" (35') OF BEAD RECEIVER IS REQUIRED.

CONTRACTOR MUST FIELD FIT ALL CONCRETE RECEPTOR.

TOTALS REQUIRED FOR THIS CUSTOM PRODUCT APPLICATION.

OPC-CONREC-XX (NOTCHED) = 0" (0')

OPC-CONREC-XXU (UN-NOTCHED) = 384" (32')

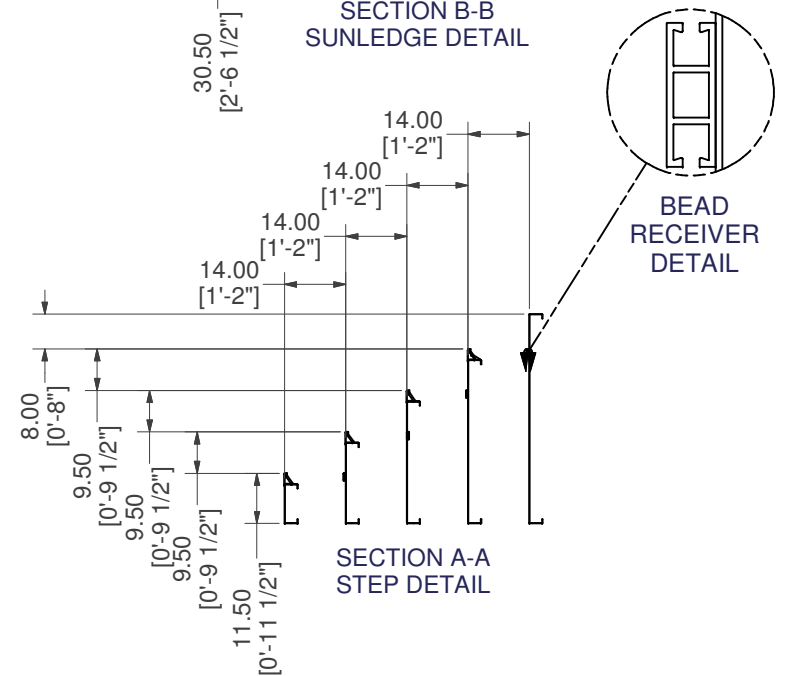
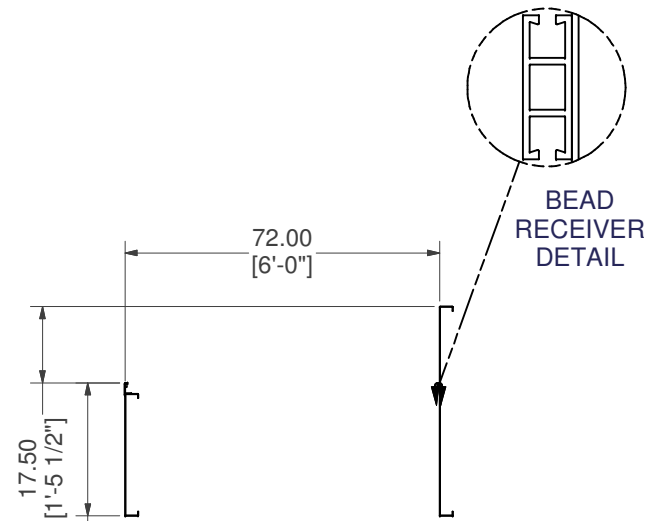
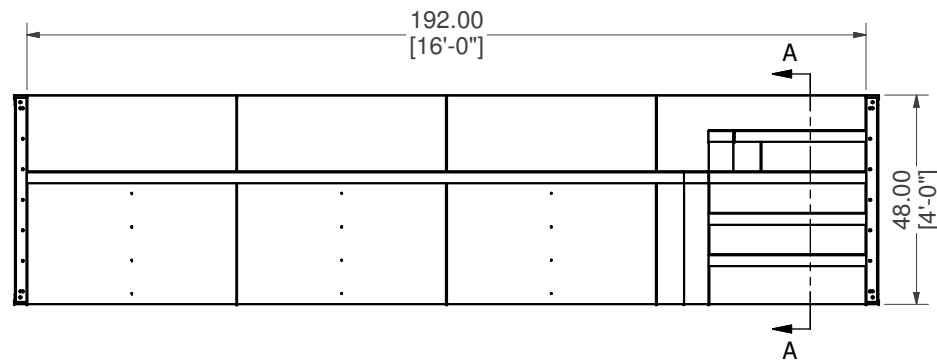
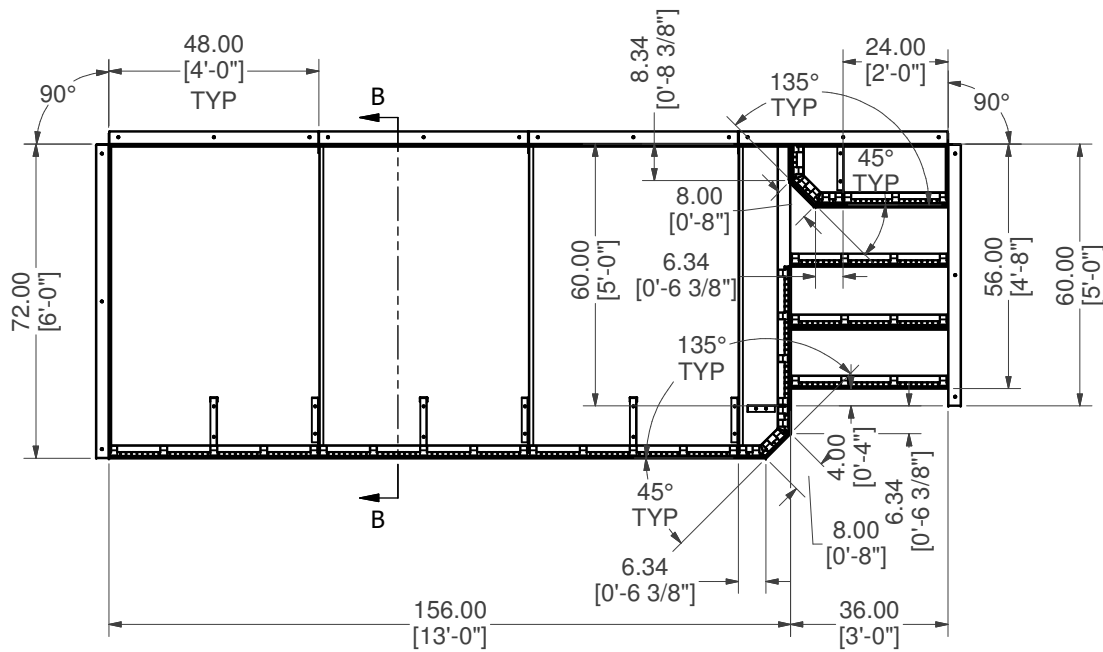
COP-KCVRET-W-1 (STIFFENER) = 46

CONTRACTOR NOTE:


BACK FILL STEP/ SUNLEDGE AREA WITH COMPACTED EARTH MATERIAL. FINISH STEP/ SUNLEDGE AREA WITH 2" OF HARDEN FLOOR MATERIAL TO MATCH REQUIRED DEPTH (FLUSH WITH TOP OF BEAD RECEIVER).

16' X 6' X 90° CRN OPEN TOP STEP W/ SUNLEDGE LEFT

PART #: ESC-9905	WEIGHT: 859.94 lbmass	MACHINE TIME: N/A	FILE/DIRECTORY: C:\Vault\FTWDesign\CUSTOM STEPS\ESC-9000-9999\ESC-9905.idw
	TOLERANCES EXCEPT AS NOTED	MATERIAL:	DATE: 4/21/2020
	0/0 0.0 0.00 0.000 0'	DRAWN BY: MS	SHEET: 1 OF 23
	±1/8 ±0.25 ±0.0625 ±0.03125 ±1/2'		NOTES: W030801, SO# 5464709 PO# CQ224409



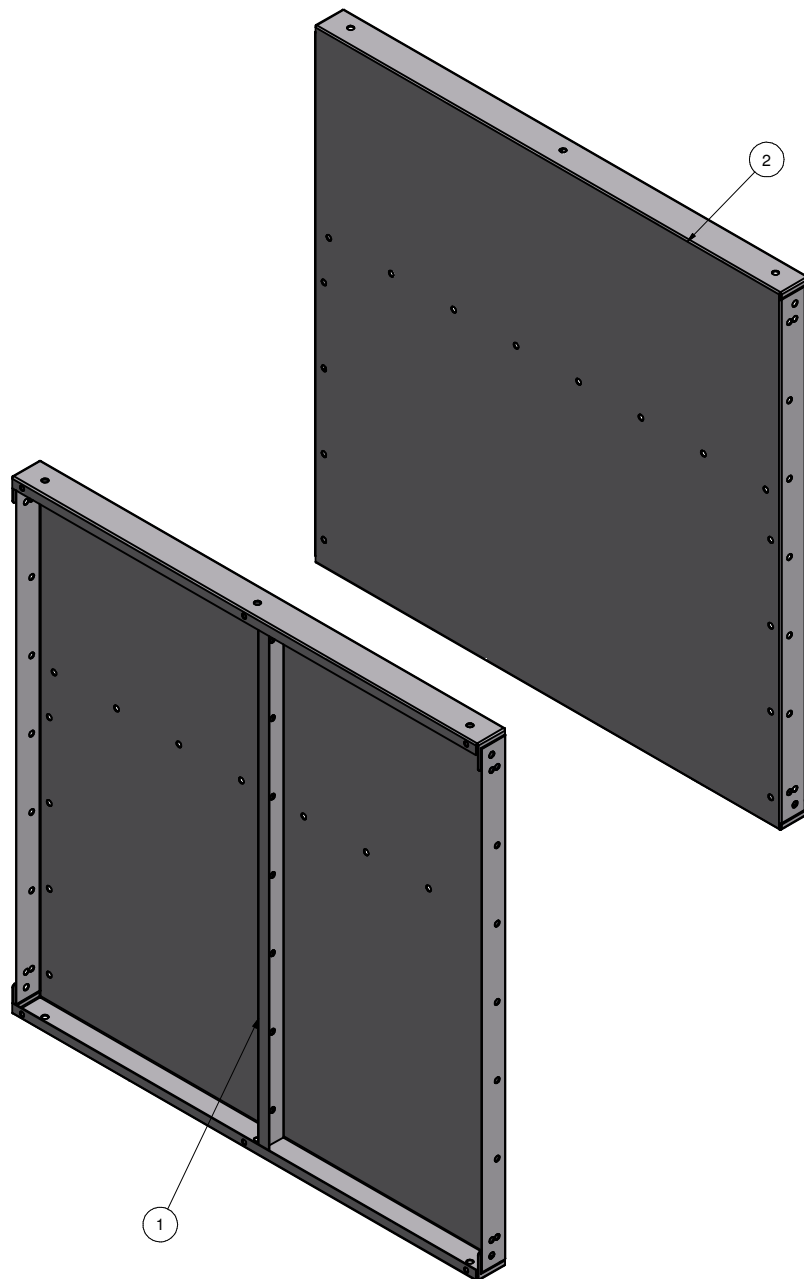
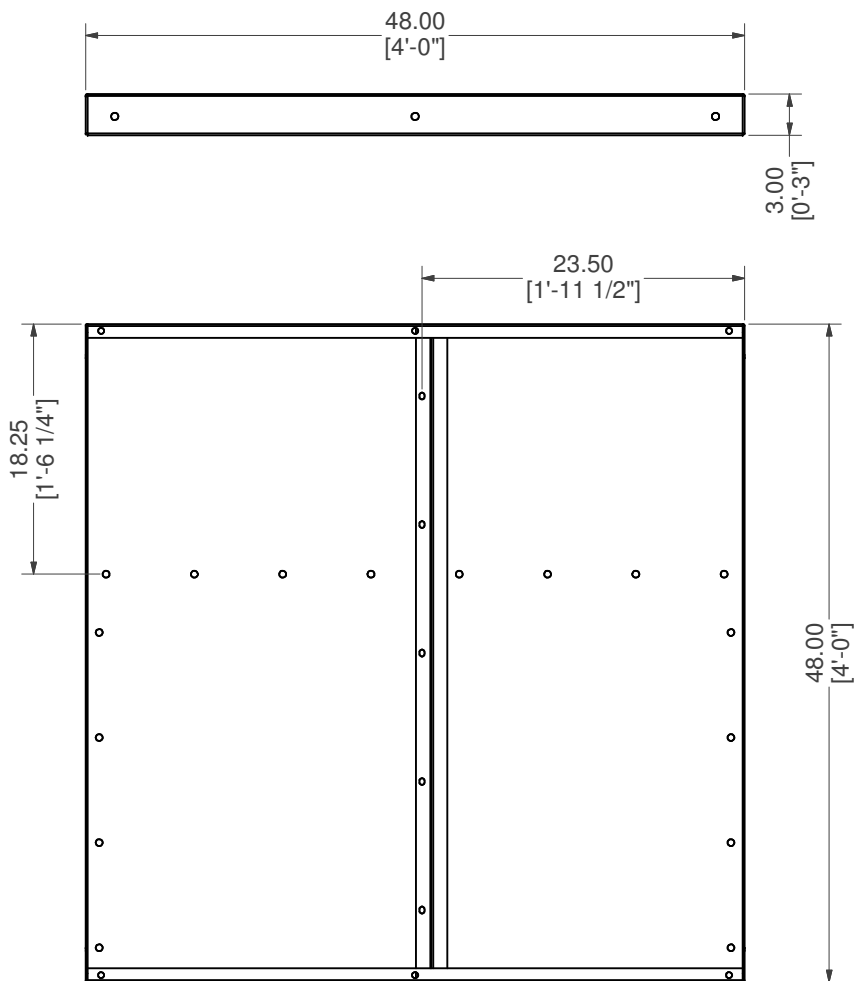
16' X 6' X 90° CRN OPEN TOP STEP W/ SUNLEDGE LEFT

PART #: ESC-9905 	WEIGHT: 859.94 lbmass	MACHINE TIME: N/A	FILE/DIRECTORY: C:\Vault\FTWDesign\CUSTOM STEPS\ESC-9000-9999\ESC-9905.idw
	TOLERANCES EXCEPT AS NOTED 0/0 0.0 0.00 0.000 0' ±1/8 ±0.25 ±0.0625 ±0.03125 ±1/2"	MATERIAL: DRAWN BY: MS	DATE: 4/21/2020 SHEET: 2 OF 23

Parts List

ITEM	QTY	PART NUMBER	DESCRIPTION
1	1	48-Z-RIB	48" Z-RIB
2	1	ESC-9905-BW	STRAIGHT, OPN BACK WALL

WELDCODE #20



STRAIGHT, OPN BACK WALL W/Z-RIB

PART #: ESC-9905-BW

WEIGHT:
63.29 lbmass

MACHINE TIME:
N/A

FILE/DIRECTORY:

C:\Vault\FTWDesign\CUSTOM STEPS\ESC-9000-9999\ESC-9905.idw



TOLERANCES EXCEPT AS NOTED

0/0	0.0	0.00	0.000	0'
±1/8	±0.25	±0.0625	±0.03125	±1/2"

MATERIAL:

DATE : 4/21/2020

NOTES:

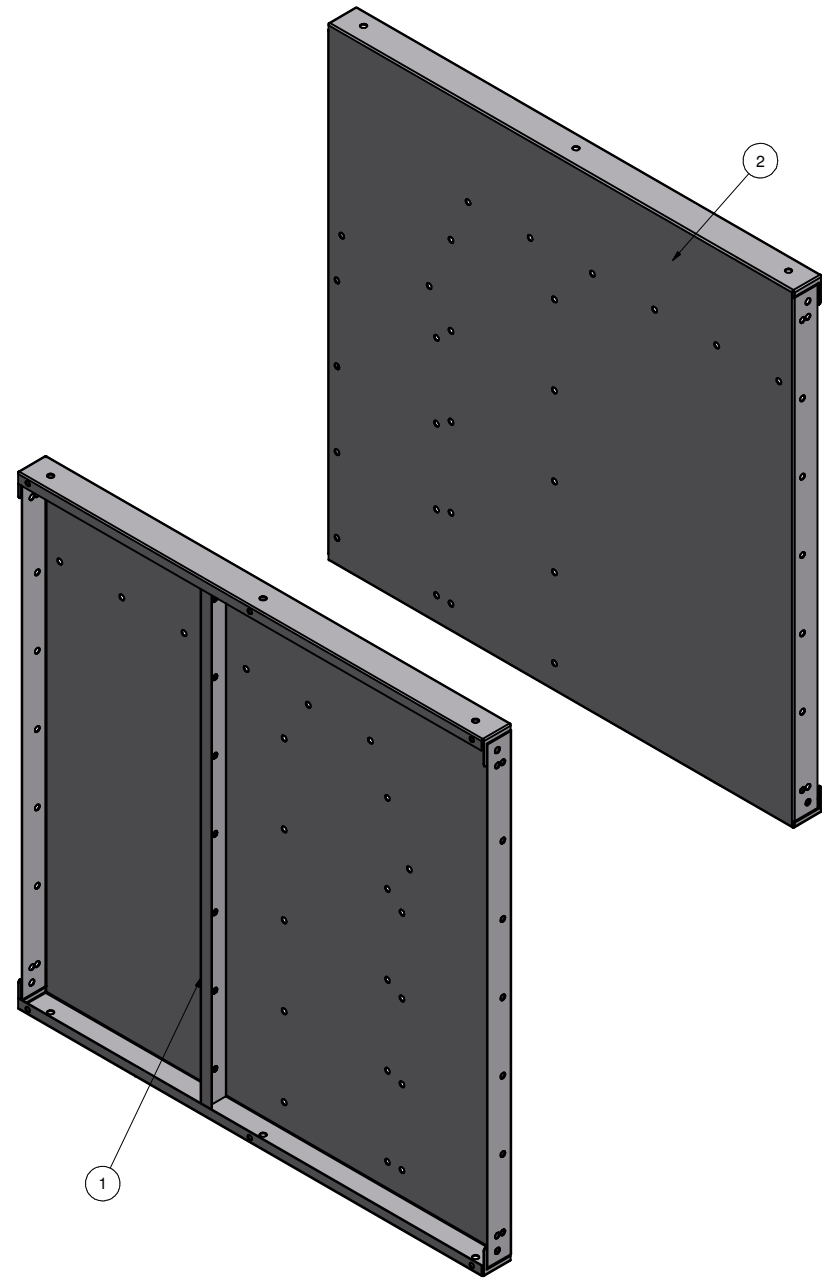
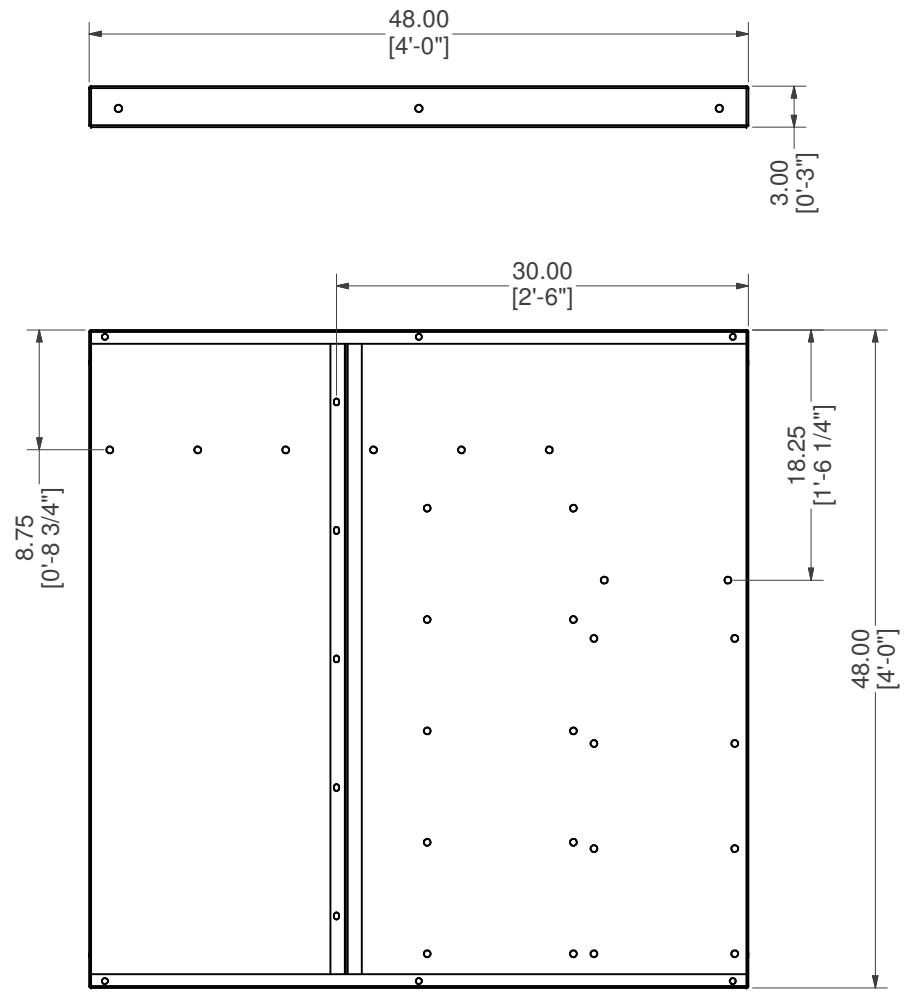
DRAWN BY: MS

SHEET : 3 OF 23


WELDCODE #20
LOCATE 23.5" FROM
LEADING EDGE

Parts List				
ITEM	QTY	PART NUMBER	DESCRIPTION	
1	1	48-Z-RIB	48" Z-RIB	
2	1	ESC-9905-BWR	STRAIGHT, OPN BACK WALL, RIGHT	

WELDCODE #17



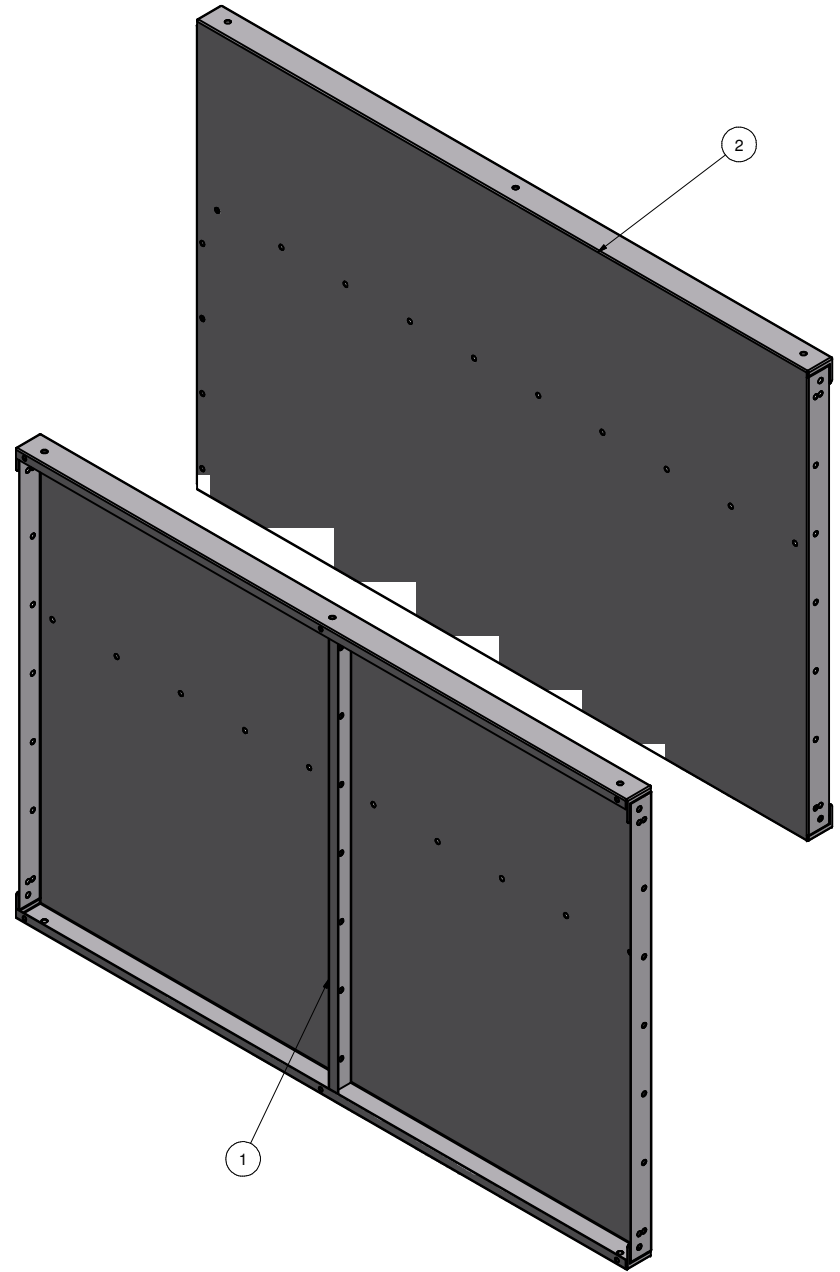
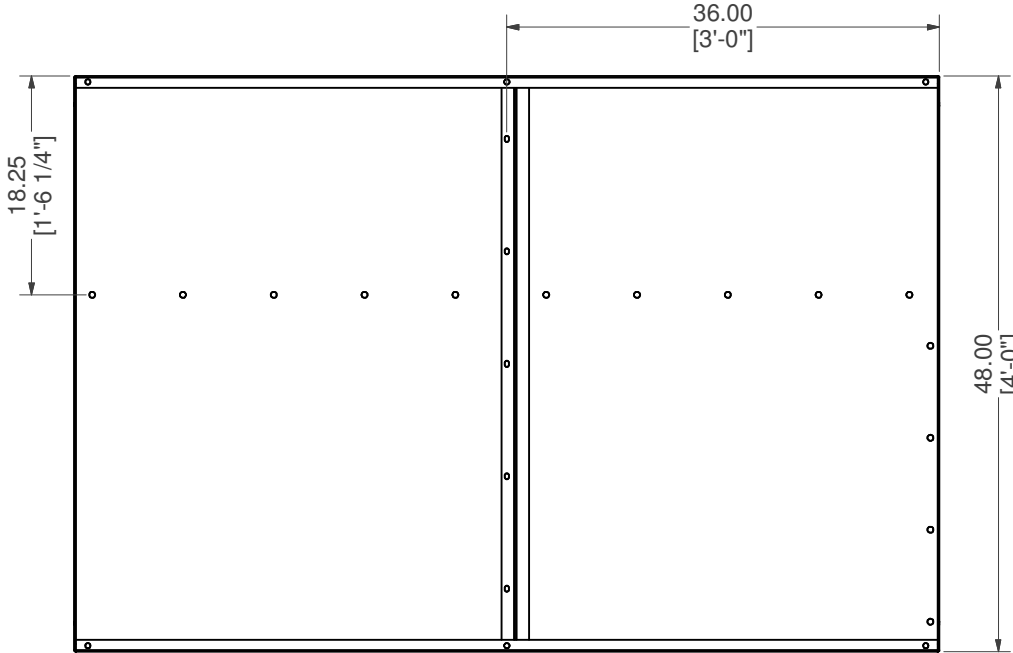
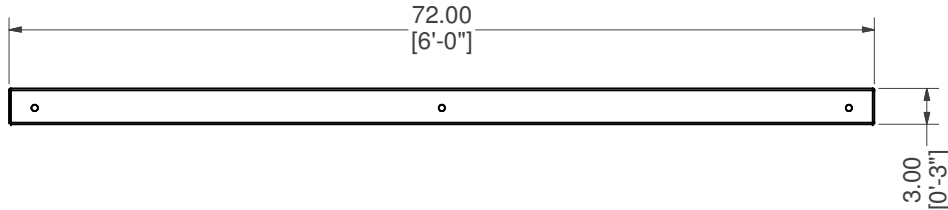
STRAIGHT, OPN BACK WALL, RIGHT W/ Z-RIBS

PART #: ESC-9905-BWR 	WEIGHT: 63.25 lbmass	MACHINE TIME: N/A	FILE/DIRECTORY: C:\Vault\FTWDesign\CUSTOM STEPS\ESC-9000-9999\ESC-9905.idw
	TOLERANCES EXCEPT AS NOTED 0/0 0.0 0.00 0.000 0' ±1/8 ±0.25 ±0.0625 ±0.03125 ±1/2'	MATERIAL: DRAWN BY: MS	DATE: 4/21/2020 SHEET: 4 OF 23

Parts List

ITEM	QTY	PART NUMBER	DESCRIPTION
1	1	48-Z-RIB	48" Z-RIB
2	1	ESC-9905-SWL	STRAIGHT, OPN SIDE WALL, LEFT

WELDCODE #22

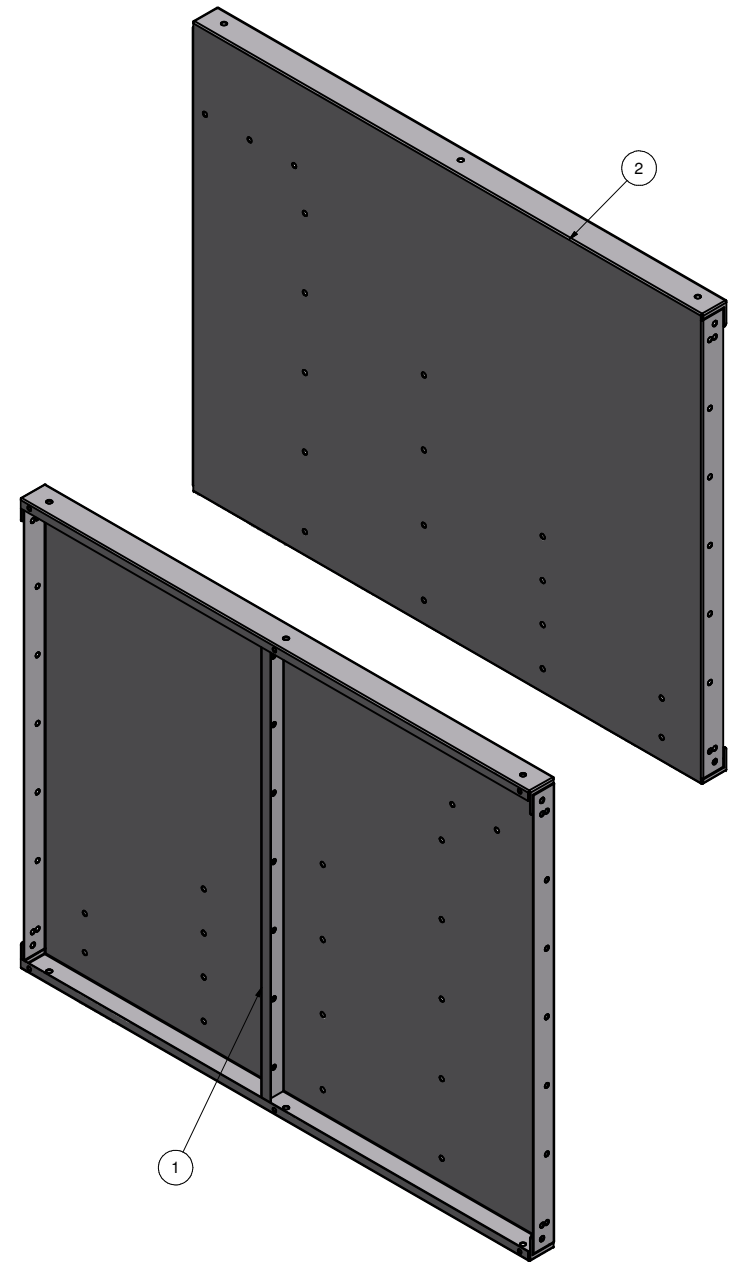
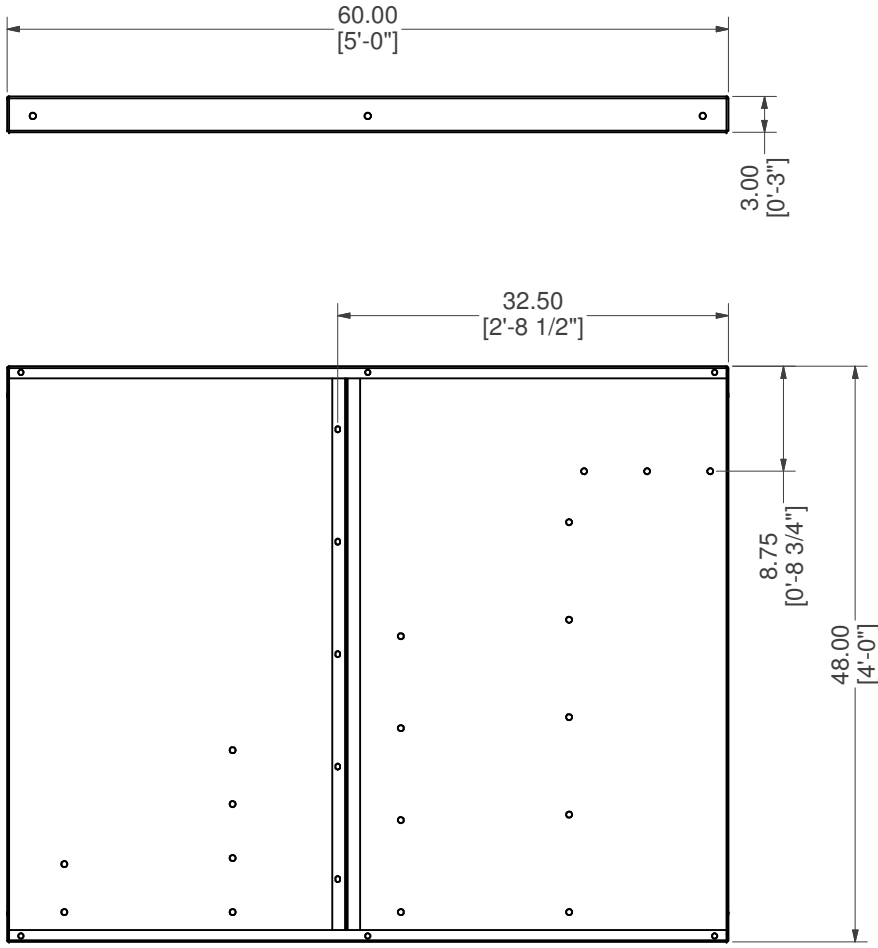


STRAIGHT, OPN SIDE WALL, LEFT W/ Z-RIBS


PART #: ESC-9905-SWL 	WEIGHT: 90.38 lbmass	MACHINE TIME: N/A	FILE/DIRECTORY: C:\Vault\FTWDesign\CUSTOM STEPS\ESC-9000-9999\ESC-9905.idw
	TOLERANCES EXCEPT AS NOTED 0/0 0.0 0.00 0.000 0' ±1/8 ±0.25 ±0.0625 ±0.03125 ±1/2'	MATERIAL: MS	DATE: 4/21/2020 SHEET: 5 OF 23

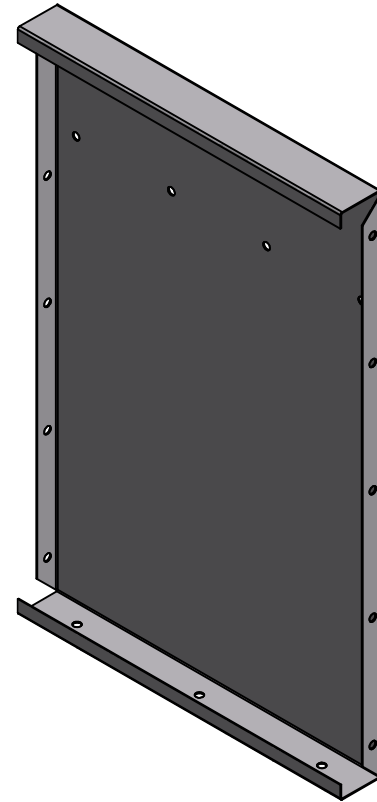
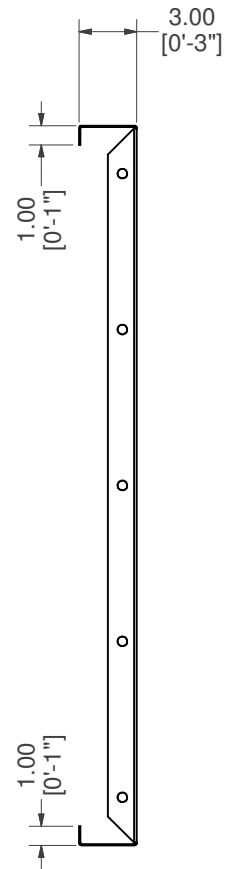
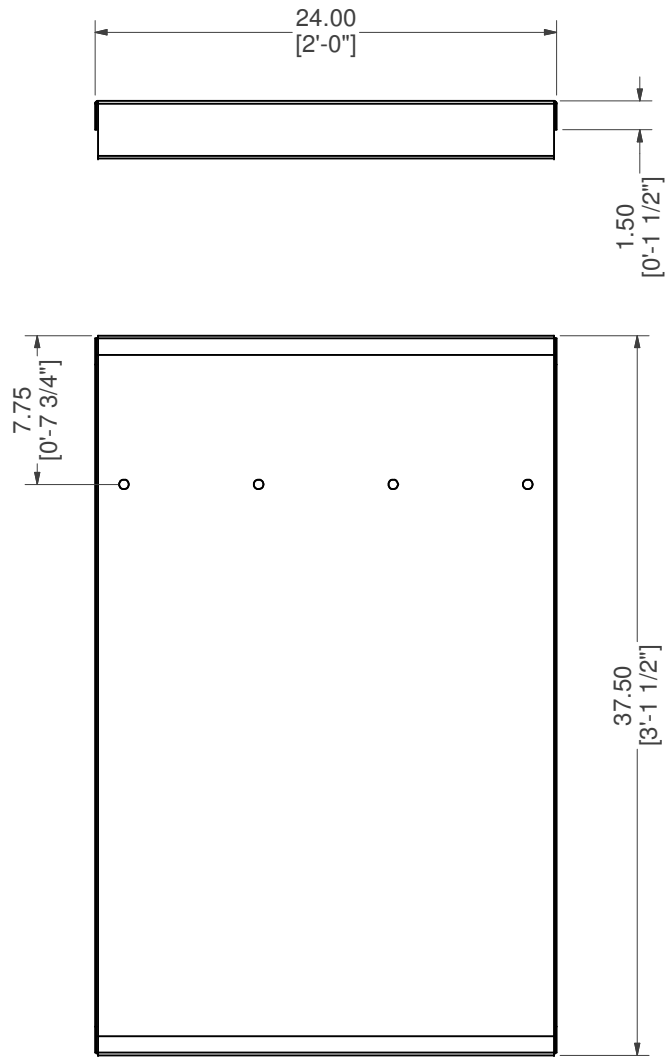
Parts List			
ITEM	QTY	PART NUMBER	DESCRIPTION
1	1	48-Z-RIB	48" Z-RIB
2	1	ESC-9905-SWR	STRAIGHT, OPN SIDE WALL, RIGHT

WELDCODE #23



STRAIGHT, OPN SIDE WALL, RIGHT W/ Z-RIBS

PART #: ESC-9905-SWR 	WEIGHT: 76.83 lbmass	MACHINE TIME: N/A	FILE/DIRECTORY: C:\Vault\FTWDesign\CUSTOM STEPS\ESC-9000-9999\ESC-9905.idw
	TOLERANCES EXCEPT AS NOTED 0/0 0.0 0.00 0.000 0' ±1/8 ±0.25 ±0.0625 ±0.03125 ±1/2'	MATERIAL: DRAWN BY: MS	DATE: 4/21/2020 SHEET: 6 OF 23



STRAIGHT, TOP RISER

PART #: ESC-9905-TR

WEIGHT:
23.87 lbmass

MACHINE TIME:
N/A

FILE/DIRECTORY:

C:\Vault\FTWDesign\CUSTOM STEPS\ESC-9000-9999\ESC-9905.idw



TOLERANCES EXCEPT
AS NOTED
0/0 0.0 0.00 0.000 0'
±1/8 ±0.25 ±0.0625 ±0.03125 ±1/2'

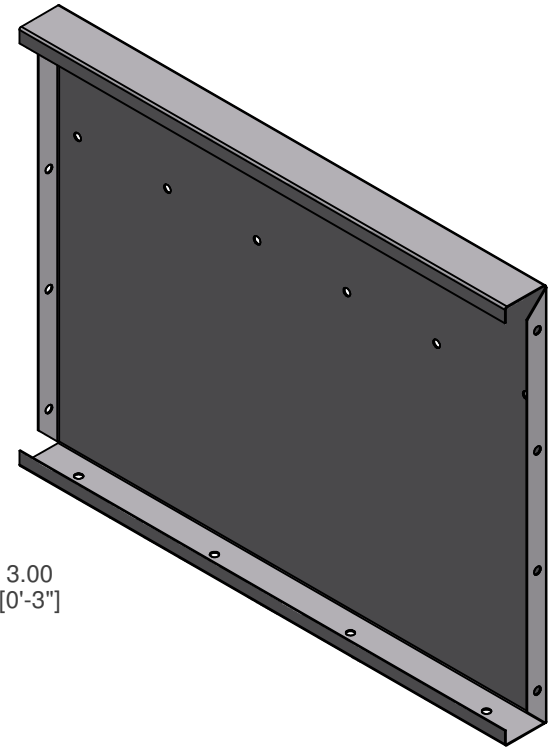
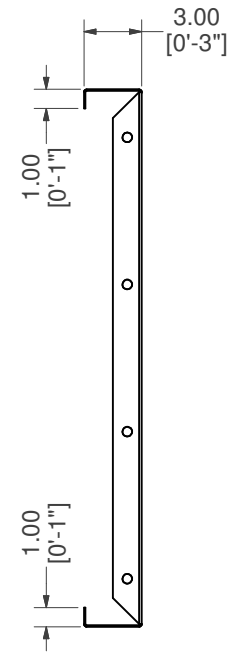
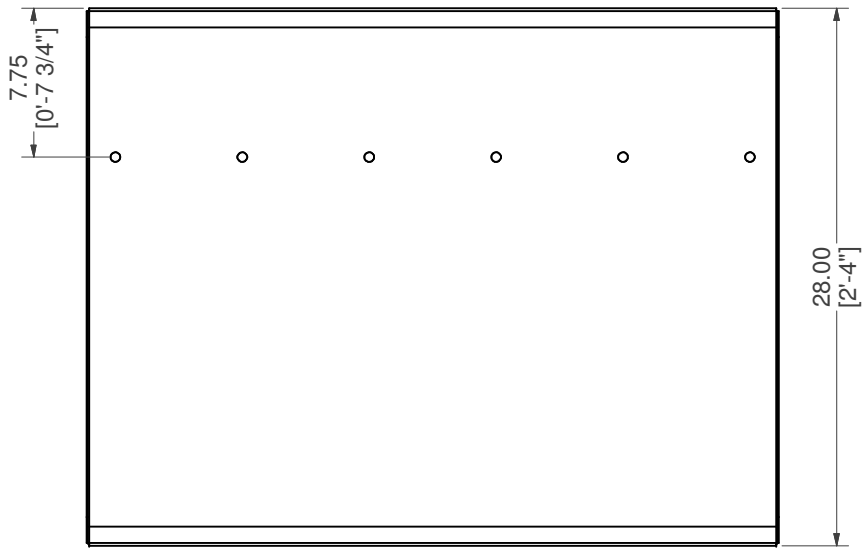
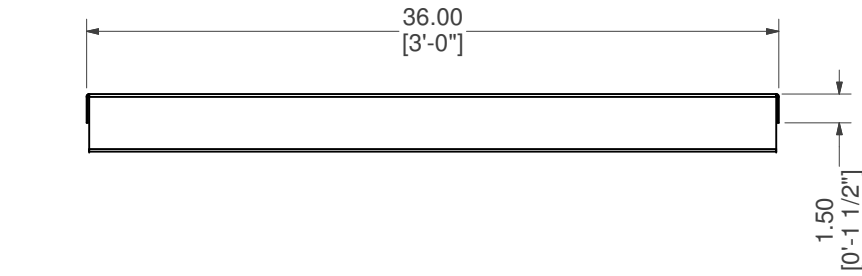
MATERIAL:
14 GA. GALVANIZED

DATE: 4/21/2020

NOTES:

DRAWN BY: MS

SHEET: 7 OF 23



STRAIGHT, MIDDLE RISER

PART #: ESC-9905-MR

WEIGHT:
27.36 lbmass

MACHINE TIME:
N/A

FILE/DIRECTORY:

C:\Vault\FTWDesign\CUSTOM STEPS\ESC-9000-9999\ESC-9905.idw



TOLERANCES EXCEPT
AS NOTED

0/0	0.0	0.00	0.000	0'
±1/8	±0.25	±0.0625	±0.03125	±1/2'

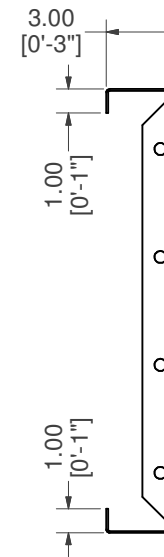
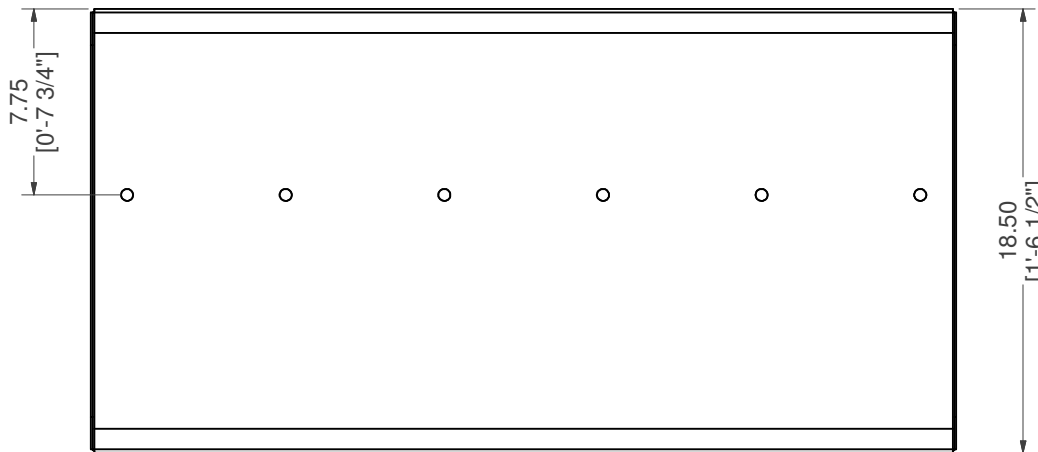
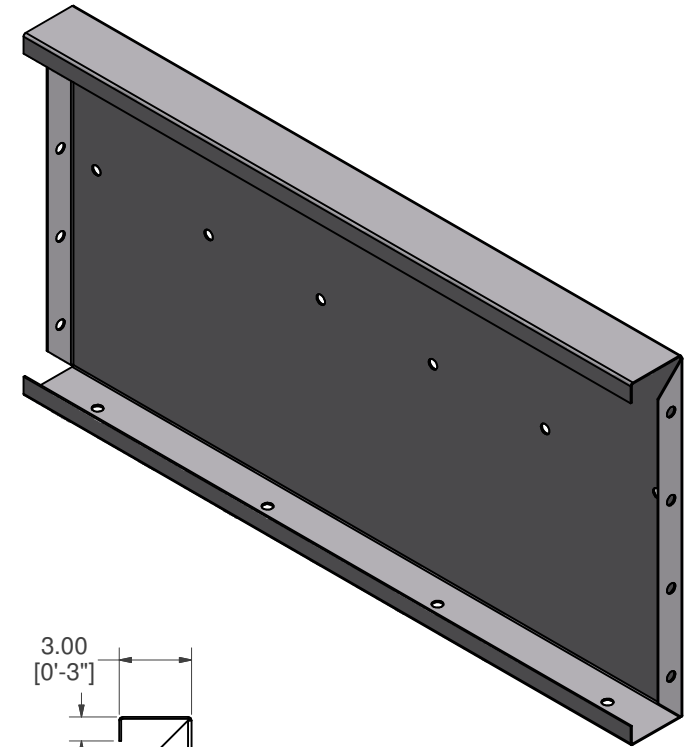
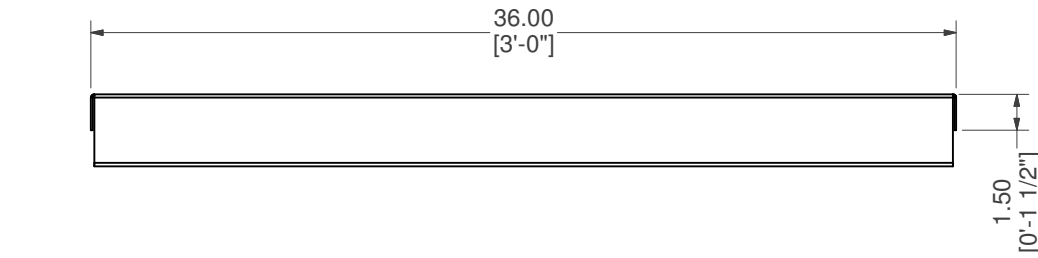
MATERIAL:
14 GA. GALVANIZED

DATE : 4/21/2020

NOTES:

DRAWN BY: MS

SHEET : 8 OF 23



STRAIGHT, BOTTOM MIDDLE RISER

PART #: ESC-9905-BMR

WEIGHT:
19.88 lbmass

MACHINE TIME:
N/A

FILE/DIRECTORY:

C:\Vault\FTWDesign\CUSTOM STEPS\ESC-9000-9999\ESC-9905.idw



TOLERANCES EXCEPT
AS NOTED

0/0	0.0	0.00	0.000	0'
±1/8	±0.25	±0.0625	±0.03125	±1/2'

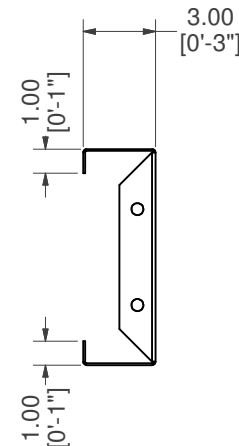
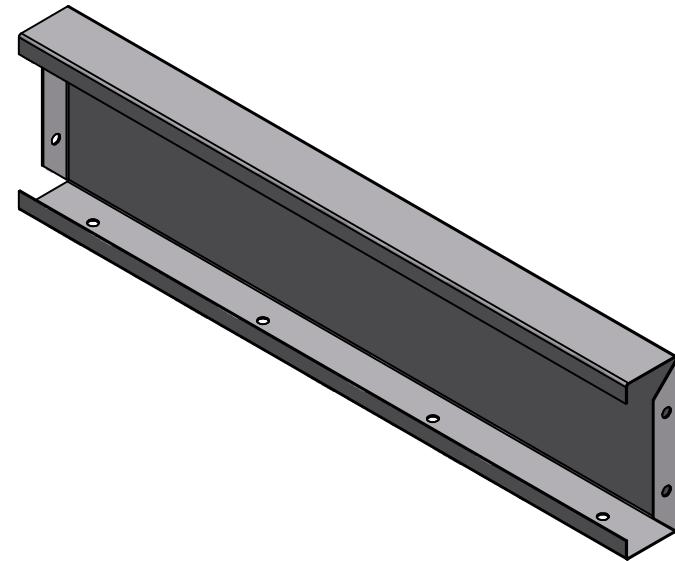
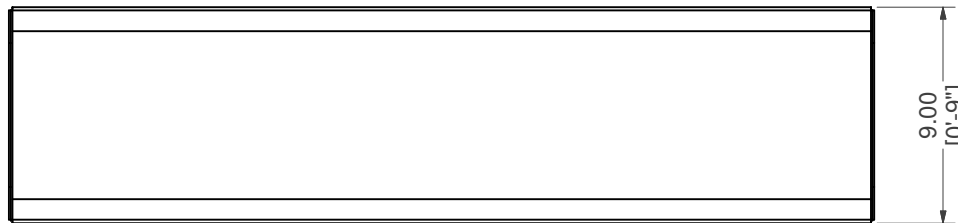
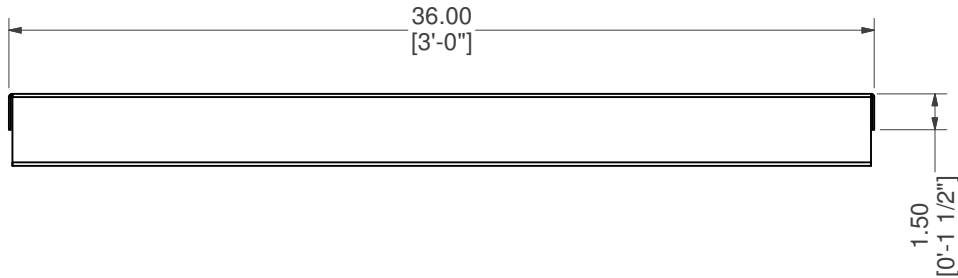
MATERIAL:
14 GA. GALVANIZED

DATE : 4/21/2020


NOTES:

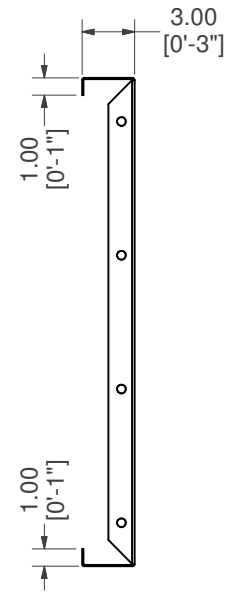
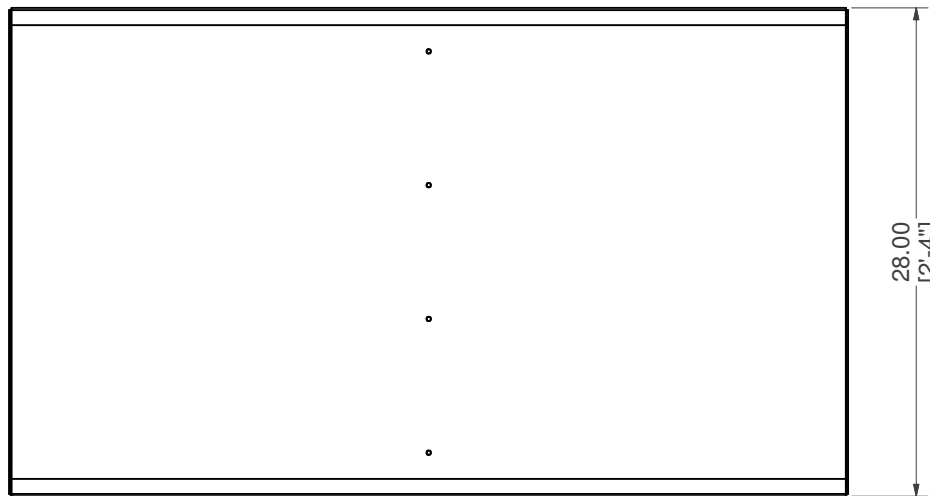
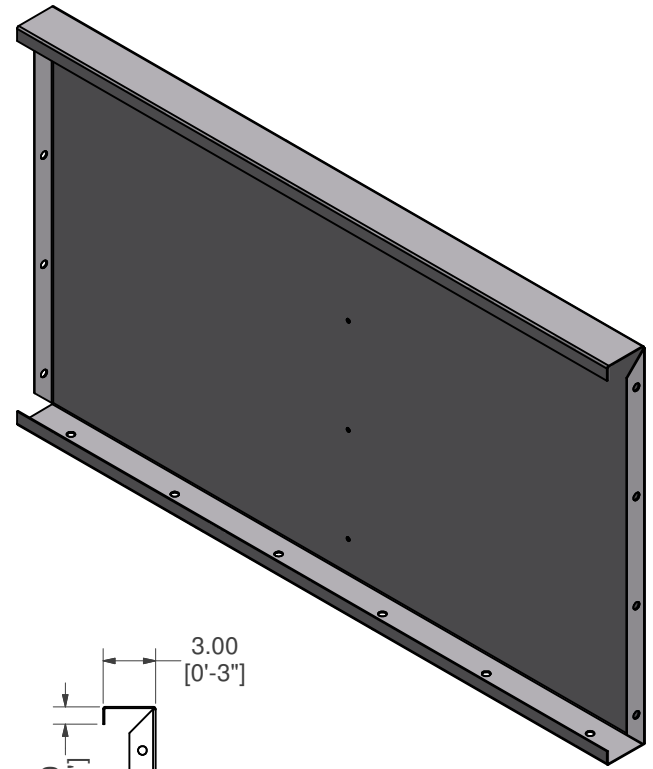
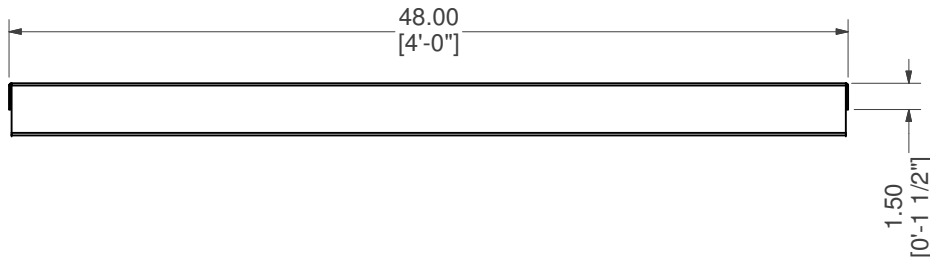
DRAWN BY: MS

SHEET : 9 OF 23



STRAIGHT, BOTTOM RISER

PART #: ESC-9905-BR	WEIGHT: 12.44 lbmass	MACHINE TIME: N/A	FILE/DIRECTORY: C:\Vault\FTWDesign\CUSTOM STEPS\ESC-9000-9999\ESC-9905.idw
	TOLERANCES EXCEPT AS NOTED	MATERIAL: 14 GA. GALVANIZED	DATE: 4/21/2020
	0/0 0.0 0.00 0.000 0' ±1/8 ±0.25 ±0.0625 ±0.03125 ±1/2'	DRAWN BY: MS	SHEET: 10 OF 23



STRAIGHT, SUNLEDGE RISER

PART #: ESC-9905-SR

WEIGHT:
36.04 lbmass

MACHINE TIME:
N/A

FILE/DIRECTORY:

C:\Vault\FTWDesign\CUSTOM STEPS\ESC-9000-9999\ESC-9905.idw



TOLERANCES EXCEPT
AS NOTED

0/0	0.0	0.00	0.000	0'
±1/8	±0.25	±0.0625	±0.03125	±1/2'

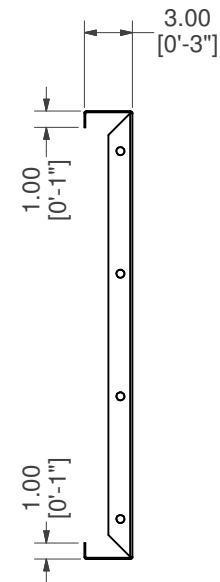
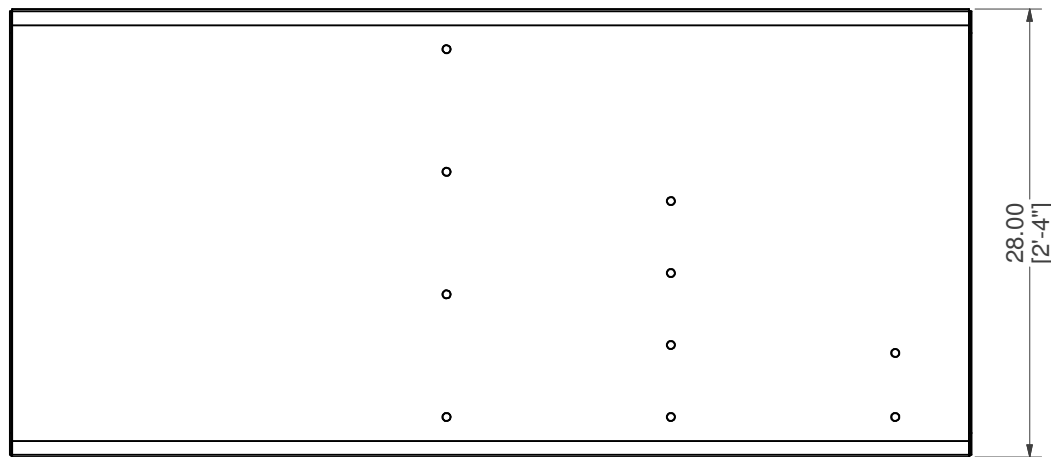
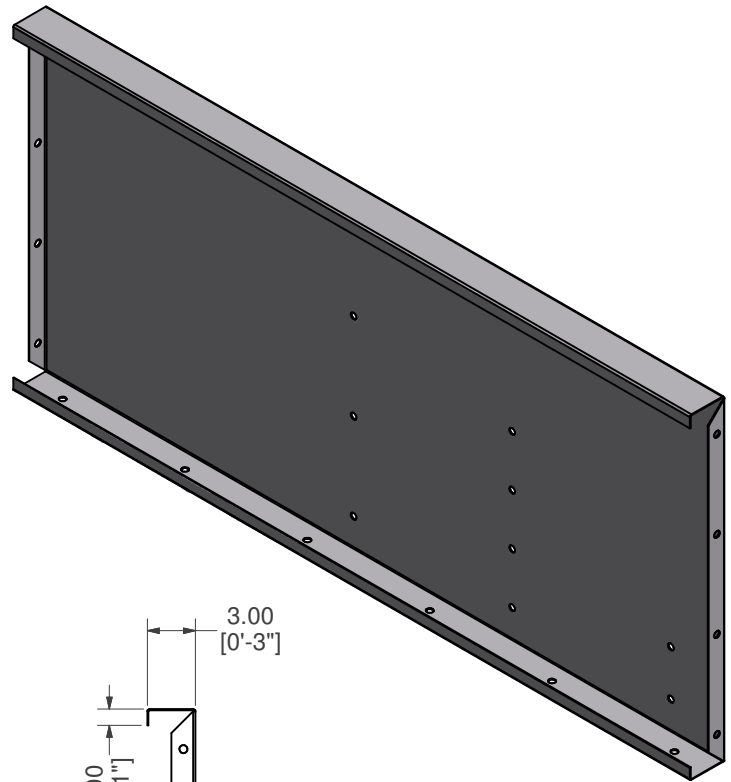
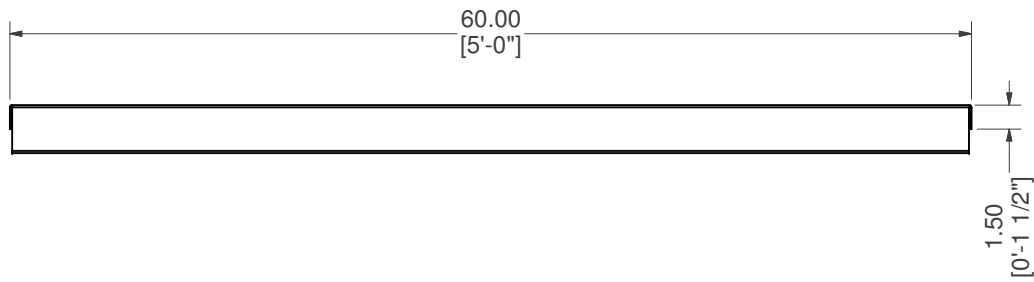
MATERIAL:
14 GA. GALVANIZED

DATE : 4/21/2020

NOTES:

DRAWN BY: MS

SHEET : 11 OF 23



STRAIGHT, SUNLEDGE RISER, BACK

PART #: ESC-9905-SRB

WEIGHT:
44.67 lbmass

MACHINE TIME:
N/A

FILE/DIRECTORY:

C:\Vault\FTWDesign\CUSTOM STEPS\ESC-9000-9999\ESC-9905.idw



TOLERANCES EXCEPT
AS NOTED

0/0	0.0	0.00	0.000	0'
±1/8	±0.25	±0.0625	±0.03125	±1/2'

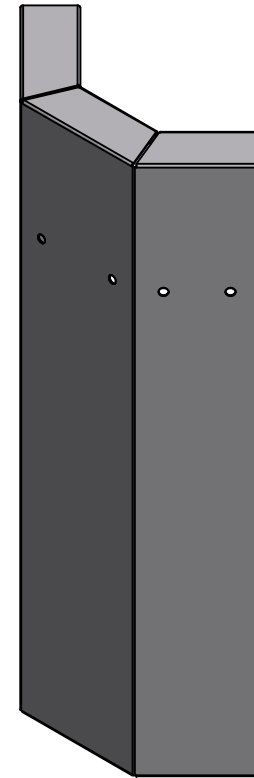
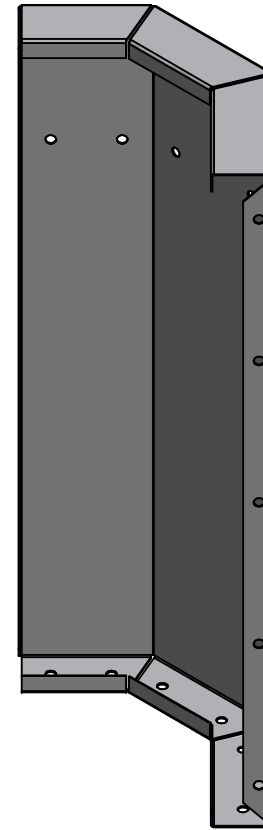
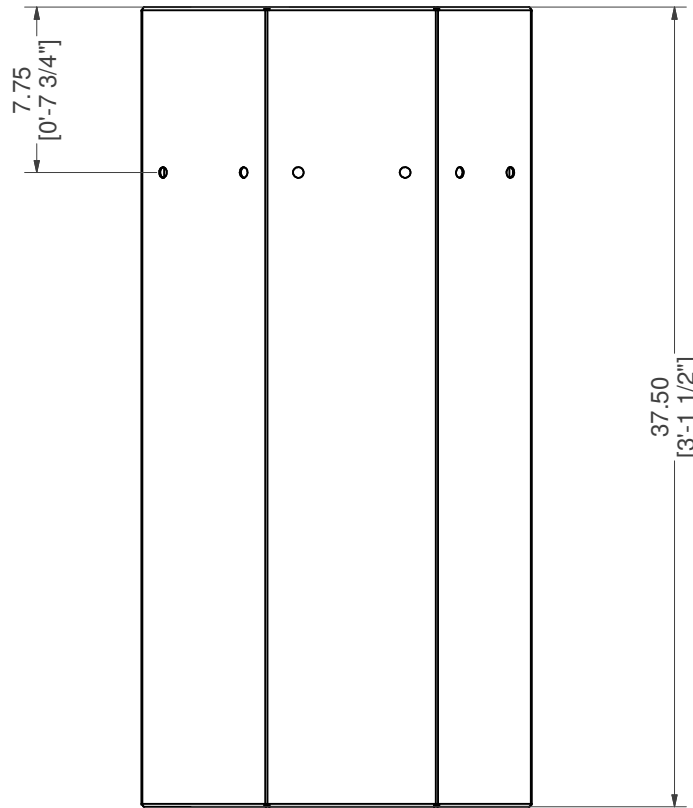
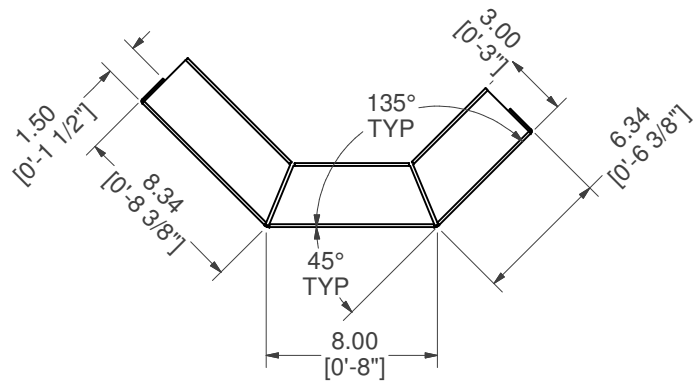
MATERIAL:
14 GA. GALVANIZED

DATE : 4/21/2020


NOTES:

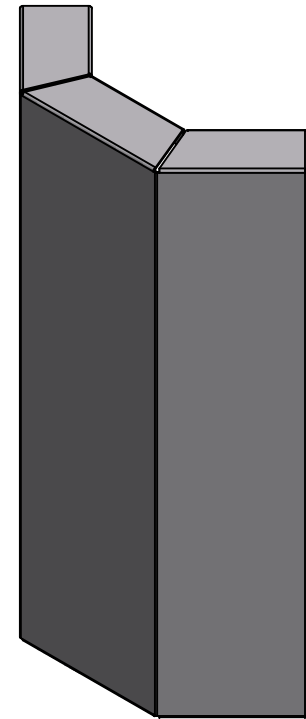
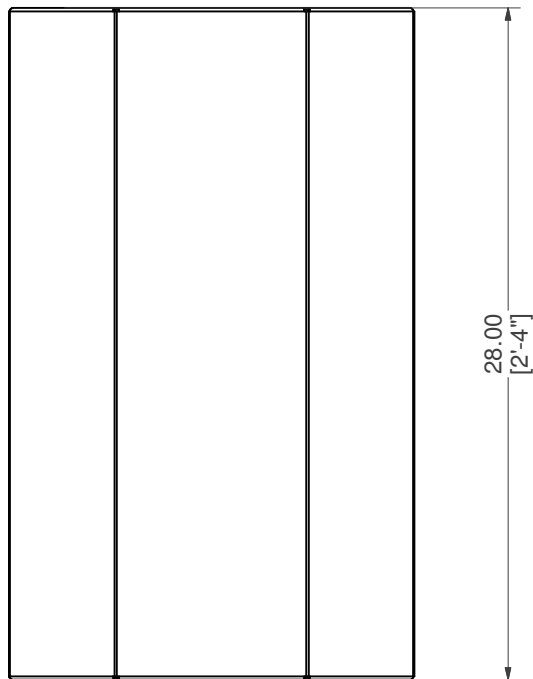
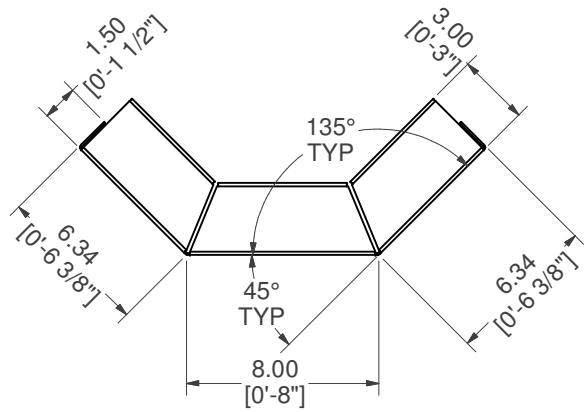
DRAWN BY: MS

SHEET : 12 OF 23



DBL REV, TOP RISER

PART #: ESC-9905-DRTR 	WEIGHT: 22.06 lbmass	MACHINE TIME: N/A	FILE/DIRECTORY: C:\Vault\FTWDesign\CUSTOM STEPS\ESC-9000-9999\ESC-9905.idw
	TOLERANCES EXCEPT AS NOTED 0/0 0.0 0.00 0.000 0' ±1/8 ±0.25 ±0.0625 ±0.03125 ±1/2'	MATERIAL: 14 GA. GALVANIZED	DATE : 4/21/2020
DRAWN BY: MS	SHEET : 13 OF 23		



DBL REV, SUNLEDGE RISER

PART #: ESC-9905-DRSR

WEIGHT:
15.75 lbmass

MACHINE TIME:
N/A

FILE/DIRECTORY:

C:\Vault\FTWDesign\CUSTOM STEPS\ESC-9000-9999\ESC-9905.idw



TOLERANCES EXCEPT
AS NOTED
0/0 0.0 0.00 0.000 0'
±1/8 ±0.25 ±0.0625 ±0.03125 ±1/2'

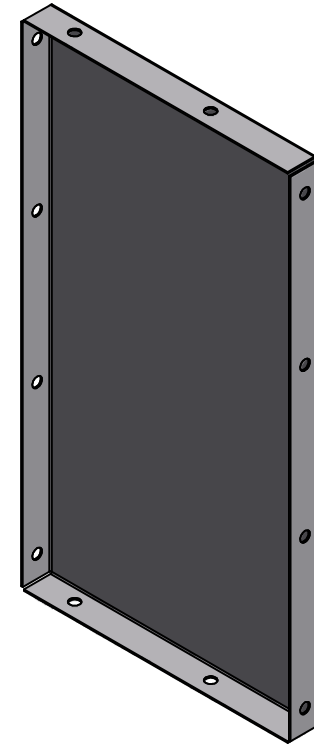
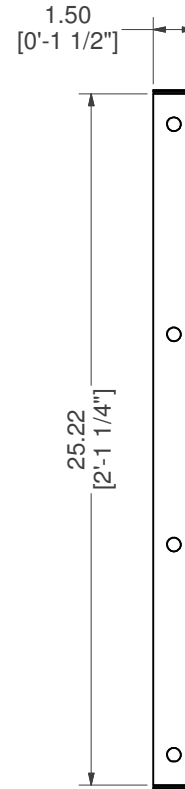
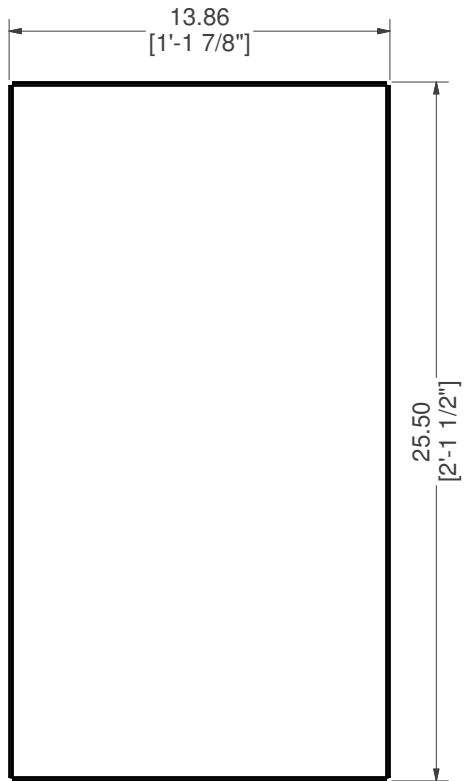
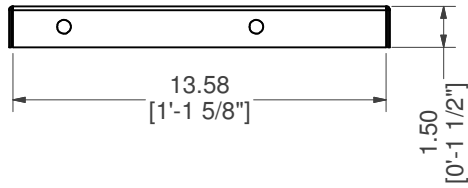
MATERIAL:
14 GA. GALVANIZED

DATE : 4/21/2020

NOTES:

DRAWN BY: MS

SHEET : 14 OF 23



BRACE, SUNLEDGE RISER MIDDLE SUPPORT

PART #: ESC-8794-SRMS

WEIGHT:
9.32 lbmass

MACHINE TIME:
N/A

FILE/DIRECTORY:

C:\Vault\FTWDesign\CUSTOM STEPS\ESC-9000-9999\ESC-9905.idw



TOLERANCES EXCEPT AS NOTED
 0/0 0.0 0.00 0.000 0'
 ±1/8 ±0.25 ±0.0625 ±0.03125 ±1/2'

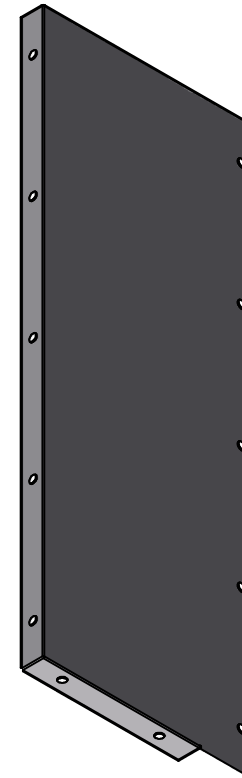
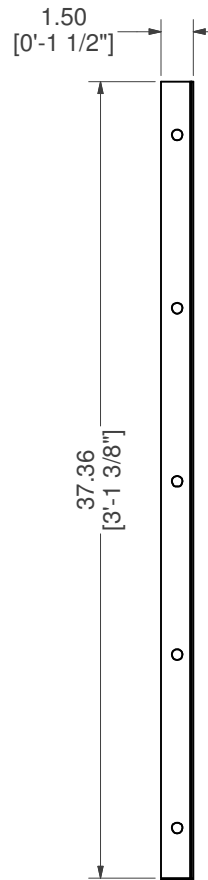
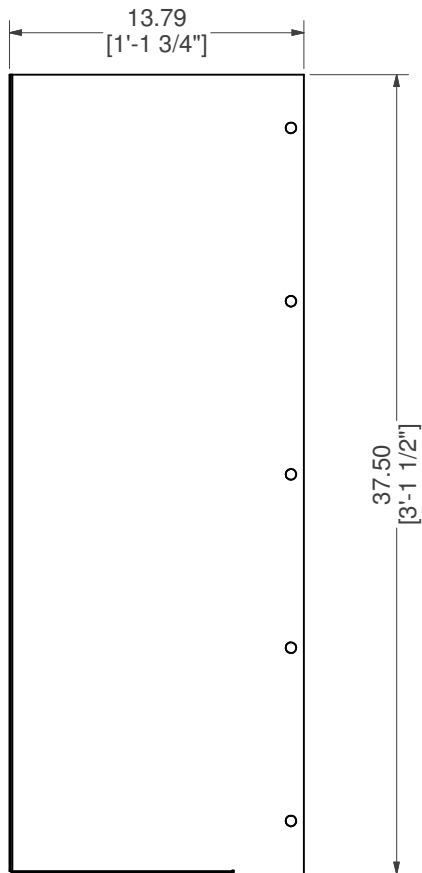
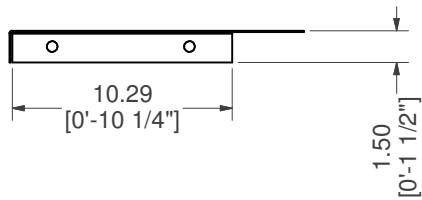
MATERIAL:
14 GA. GALVANIZED

DATE : 4/21/2020


NOTES:

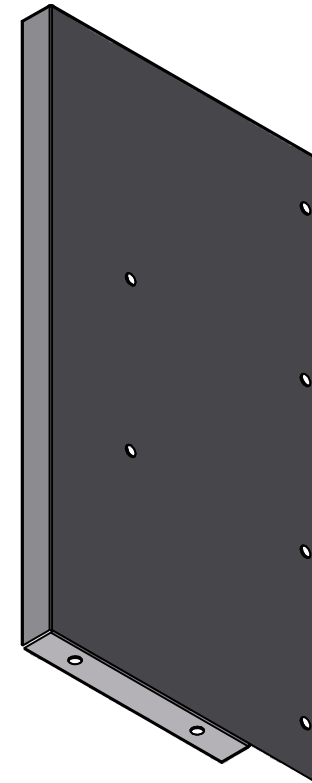
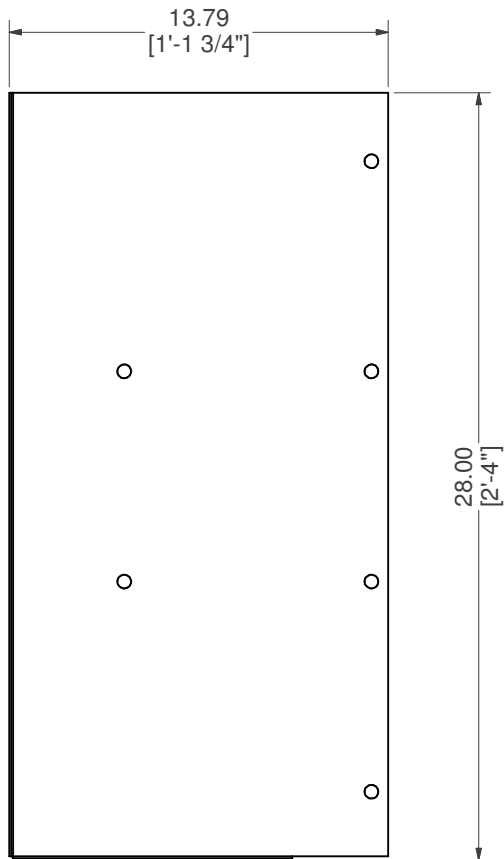
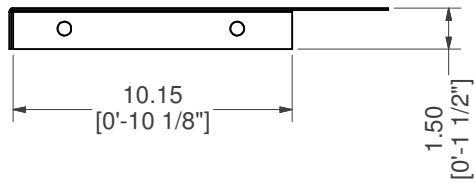
DRAWN BY: MS

SHEET : 15 OF 23




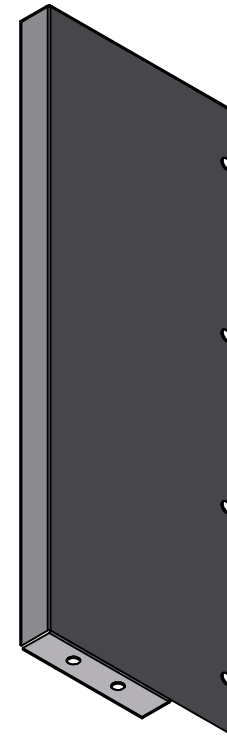
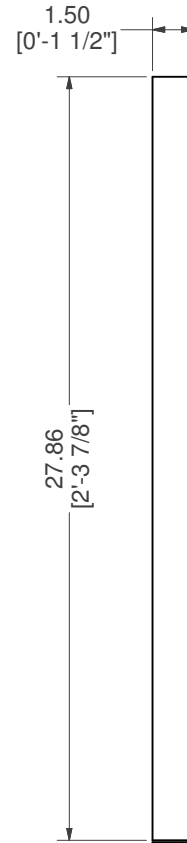
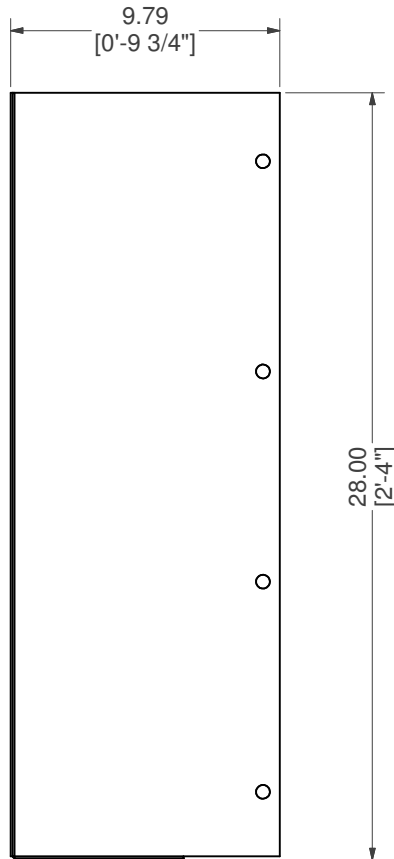
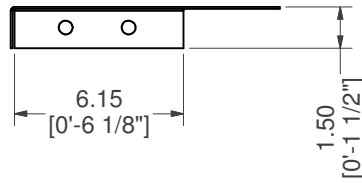
BRACE, TOP RISER SUPPORT

PART #: ESC-7295-TRB 	WEIGHT: 11.80 lbmass	MACHINE TIME: N/A	FILE/DIRECTORY: C:\Vault\FTWDesign\CUSTOM STEPS\ESC-9000-9999\ESC-9905.idw
	TOLERANCES EXCEPT AS NOTED 0/0 0.0 0.00 0.000 0' ±1/8 ±0.25 ±0.0625 ±0.03125 ±1/2'	MATERIAL: 14 GA. GALVANIZED	DATE : 4/21/2020
DRAWN BY: MS	SHEET : 16 OF 23		



BRACE, SUNLEDGE RISER SUPPORT

PART #: ESC-8794-SRS 	WEIGHT: 8.87 lbmass	MACHINE TIME: N/A	FILE/DIRECTORY: C:\Vault\FTWDesign\CUSTOM STEPS\ESC-9000-9999\ESC-9905.idw
	TOLERANCES EXCEPT AS NOTED 0/0 0.0 0.00 0.000 0' ±1/8 ±0.25 ±0.0625 ±0.03125 ±1/2'	MATERIAL: 14 GA. GALVANIZED	DATE : 4/21/2020
DRAWN BY: MS	SHEET : 17 OF 23		



BRACE, SUNLEDGE RISER SUPPORT

PART #: ESC-8794-SNRS **WEIGHT:** 6.49 lbmass **MACHINE TIME:** N/A **FILE/DIRECTORY:** C:\Vault\FTWDesign\CUSTOM STEPS\ESC-9000-9999\ESC-9905.idw

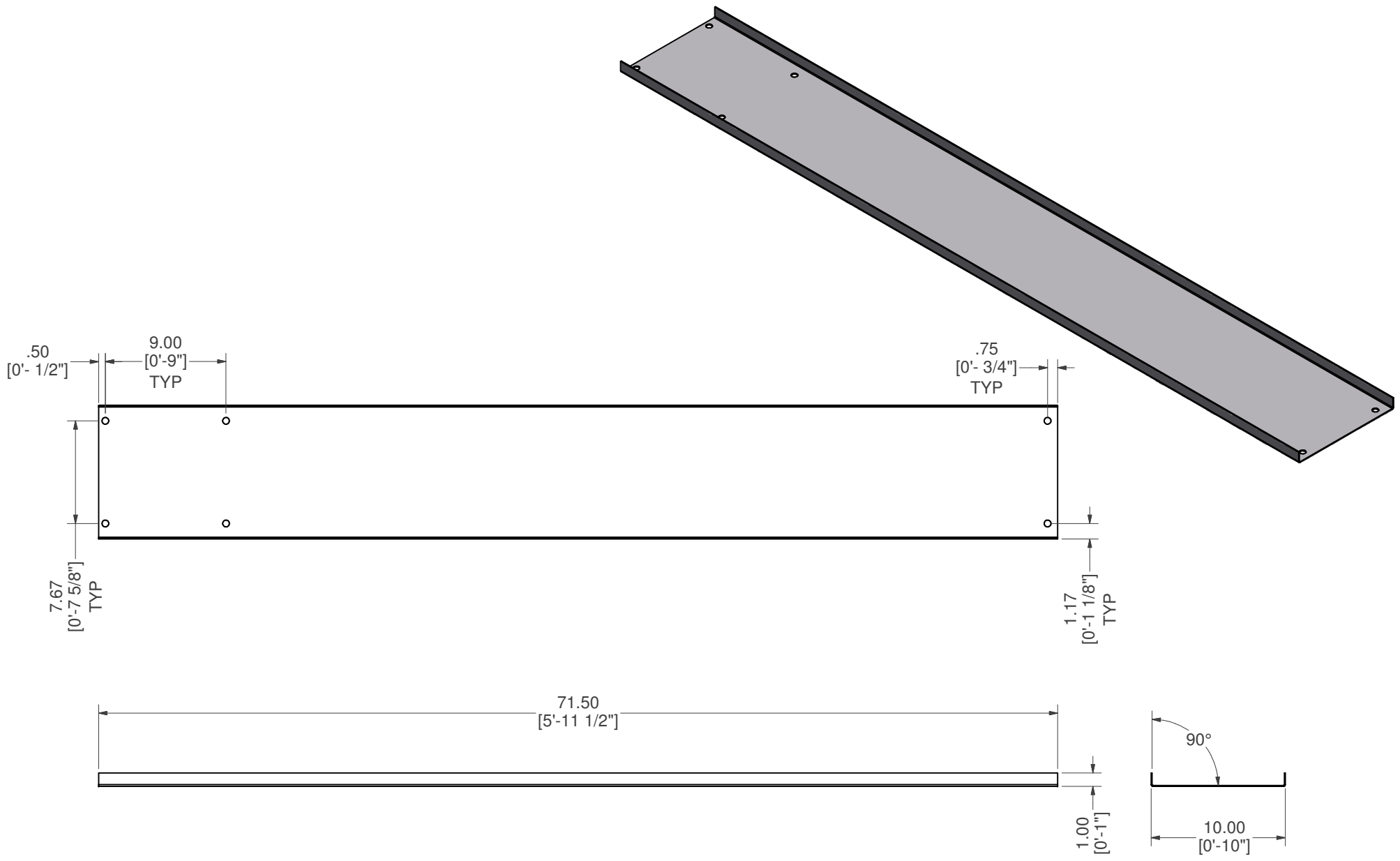


TOLERANCES EXCEPT AS NOTED
 0/0 0.0 0.00 0.000 0'
 ±1/8 ±0.25 ±0.0625 ±0.03125 ±1/2'


MATERIAL: 14 GA. GALVANIZED
DRAWN BY: MS

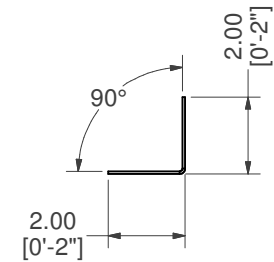
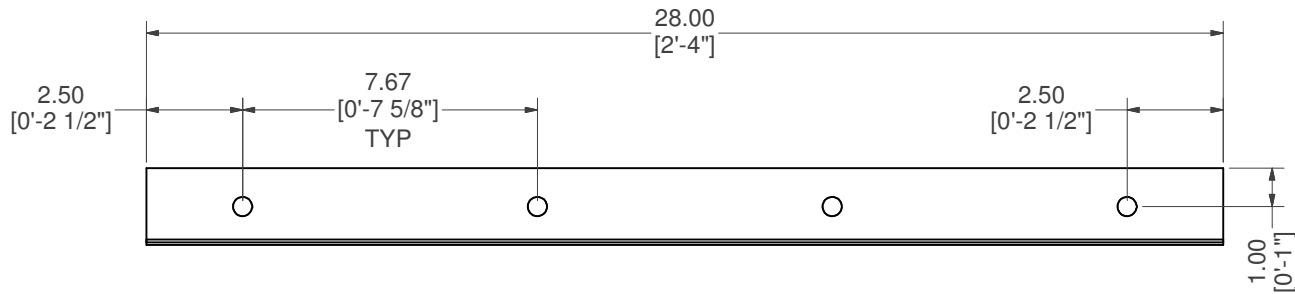
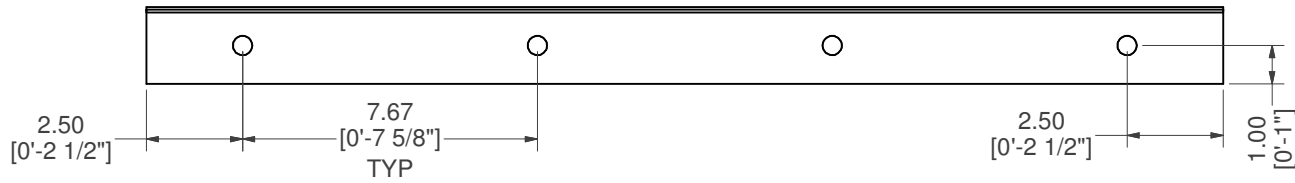
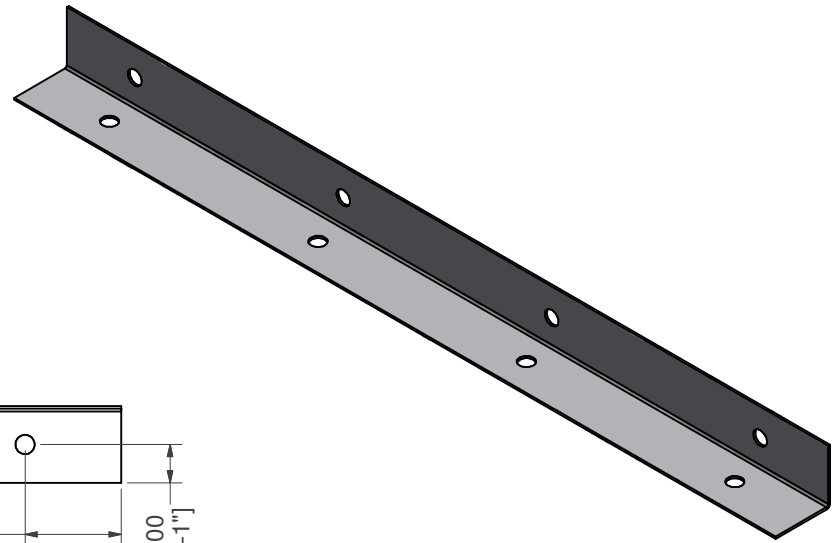
DATE : 4/21/2020
SHEET : 18 OF 23

NOTES:




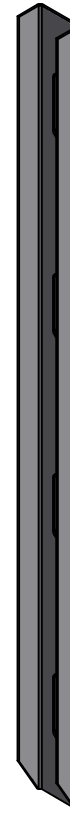
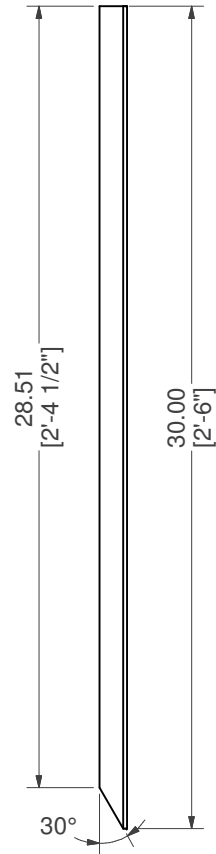
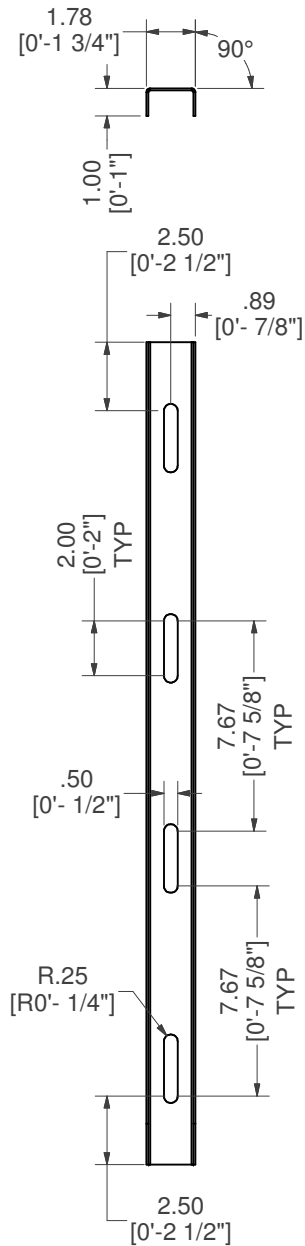
BRACE, CENTER SUPPORT

PART #: ESC-8705-CB 	WEIGHT: 17.07 lbmass	MACHINE TIME: N/A	FILE/DIRECTORY: C:\Vault\FTWDesign\CUSTOM STEPS\ESC-9000-9999\ESC-9905.idw
	TOLERANCES EXCEPT AS NOTED 0/0 0.0 0.00 0.000 0' ±1/8 ±0.25 ±0.0625 ±0.03125 ±1/2'	MATERIAL: 14 GA. GALVANIZED	DATE: 4/21/2020
DRAWN BY: MS	SHEET: 19 OF 23		



BRACE, 90° L BRACKET

PART #: ESC-8705-BB 	WEIGHT: 2.18 lbmass	MACHINE TIME: N/A	FILE/DIRECTORY: C:\Vault\FTWDesign\CUSTOM STEPS\ESC-9000-9999\ESC-9905.idw
	TOLERANCES EXCEPT AS NOTED 0/0 0.0 0.00 0.000 0' ±1/8 ±0.25 ±0.0625 ±0.03125 ±1/2'	MATERIAL: 14 GA. GALVANIZED	DATE : 4/21/2020
DRAWN BY: MS	SHEET : 20 OF 23		



BRACE, DRIVE STAKE CHANNEL SET

PART #: ESC-9367-DS

WEIGHT:
2.04 lbmass

MACHINE TIME:
N/A

FILE/DIRECTORY:
C:\Vault\FTWDesign\CUSTOM STEPS\ESC-9000-9999\ESC-9905.idw



TOLERANCES EXCEPT AS NOTED
0/0 0.0 0.00 0.000 0'
±1/8 ±0.25 ±0.0625 ±0.03125 ±1/2'

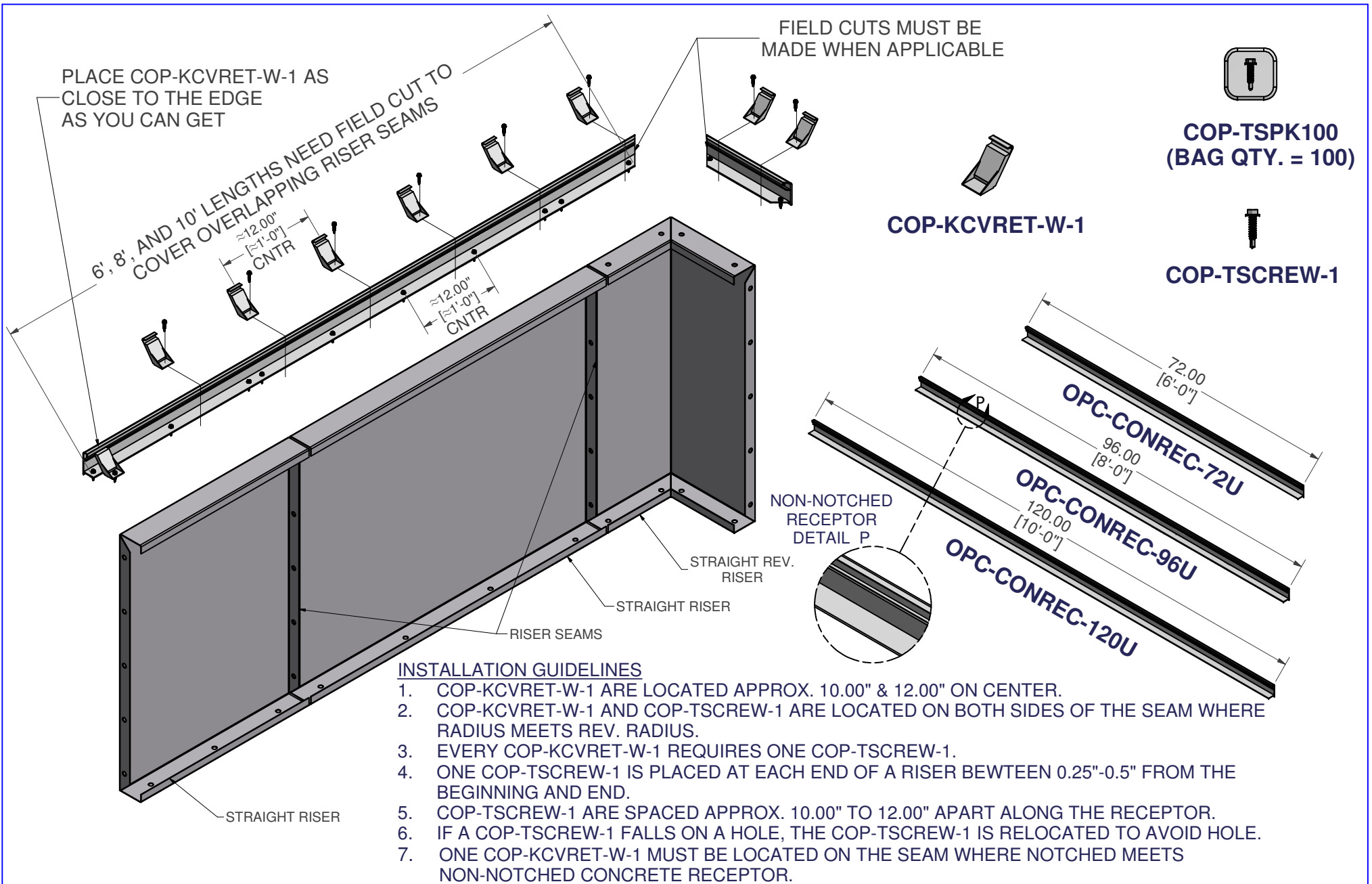
MATERIAL:
14 GA. GALVANIZED

DATE : 4/21/2020


NOTES:

DRAWN BY: MS

SHEET : 21 OF 23



NON-NOTCHED CONCRETE RECEPTOR FIELD INSTALLATION

PART #: STRAIGHT CONCRETE RECEPTOR	WEIGHT: 77.51 lbmass	MACHINE TIME: N/A	FILE/DIRECTORY: C:\Vault\FTWDesign\CUSTOM STEPS\ESC-9000-9999\ESC-9905.idw
	TOLERANCES EXCEPT AS NOTED 0/0 0.0 0.00 0.000 0'	MATERIAL:	DATE: 4/21/2020
 LATHAM <i>behind every pool</i>	±1/8 ±0.25 ±0.0625 ±0.03125 ±1/2'	DRAWN BY: MS	NOTES: SHEET: 22 OF 23

PLACE COP-KCVRET-W-1 AT SEAMS WHERE STRAIGHT MEETS A RADIUS/REV. RADIUS.

PLACE COP-TSCREW-1 ON BOTH SIDES OF THE SEAMS.

PLACE COP-KCVRET-W-1 AS CLOSE TO THE END EDGE AS YOU CAN GET.

FIELD CUTS MUST BE MADE WHEN APPLICABLE

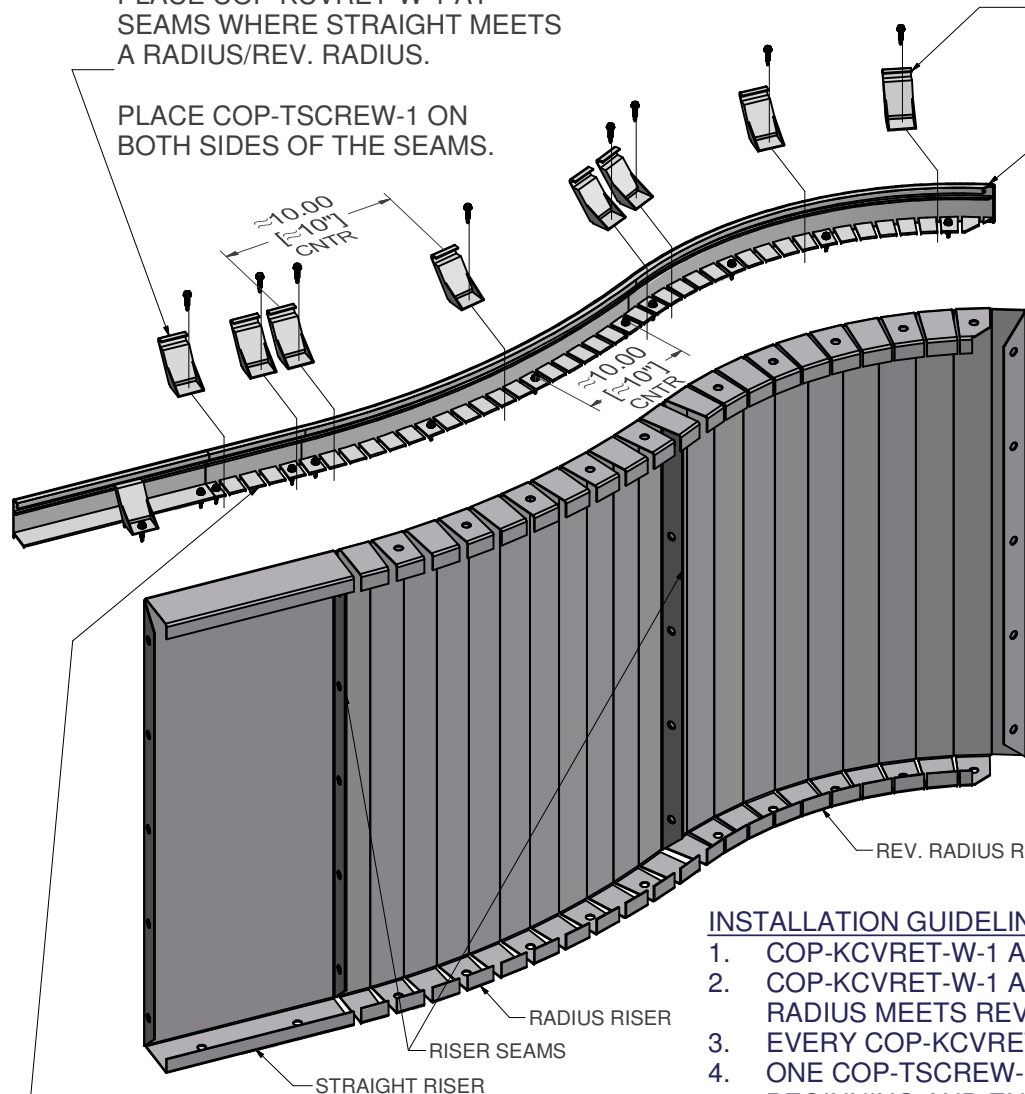


COP-TSPK100
(BAG QTY. = 100)

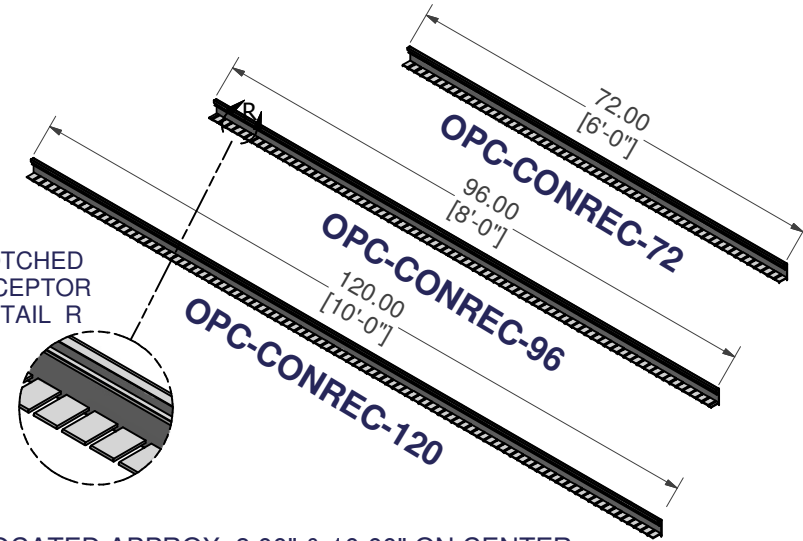


COP-TSCREW-1

COP-KCVRET-W-1



NOTCHED RECEPTOR DETAIL R



ALLOW AN APPROX. OF 6.00" OF OVERLAP GOING FROM RADIUS/ REV. RADIUS TO A STRAIGHT RISER.

INSTALLATION GUIDELINES

1. COP-KCVRET-W-1 ARE LOCATED APPROX. 8.00" & 10.00" ON CENTER.
2. COP-KCVRET-W-1 AND COP-TSCREW-1 ARE LOCATED ON BOTH SIDES OF THE SEAM WHERE RADIUS MEETS REV. RADIUS.
3. EVERY COP-KCVRET-W-1 REQUIRES ONE COP-TSCREW-1.
4. ONE COP-TSCREW-1 IS PLACED AT EACH END OF A RISER BETWEEN 0.25"-0.5" FROM THE BEGINNING AND END.
5. COP-TSCREW-1 ARE SPACED APPROX. 8.00" TO 10.00" APART ALONG THE RECEPTOR.
6. IF A COP-TSCREW-1 FALLS ON A HOLE, THE COP-TSCREW-1 IS RELOCATED TO AVOID HOLE.
7. ONE COP-KCVRET-W-1 MUST BE LOCATED ON THE SEAM WHERE NOTCHED MEETS NON-NOTCHED CONCRETE RECEPTOR.

NOTCHED CONCRETE RECEPTOR FIELD INSTALLATION

PART #: REV-RADIUS CONCRETE RECEPTOR

WEIGHT:
52.49 lbmass

MACHINE TIME:
N/A

FILE/DIRECTORY:

C:\Vault\FTWDesign\CUSTOM STEPS\ESC-9000-9999\ESC-9905.idw



TOLERANCES EXCEPT AS NOTED
0/0 0.0 0.00 0.000 0'
±1/8 ±0.25 ±0.0625 ±0.03125 ±1/2"

MATERIAL:

DATE: 4/21/2020

NOTES:

DRAWN BY: MS

SHEET: 23 OF 23